

2025 PRODUCT CATALOG



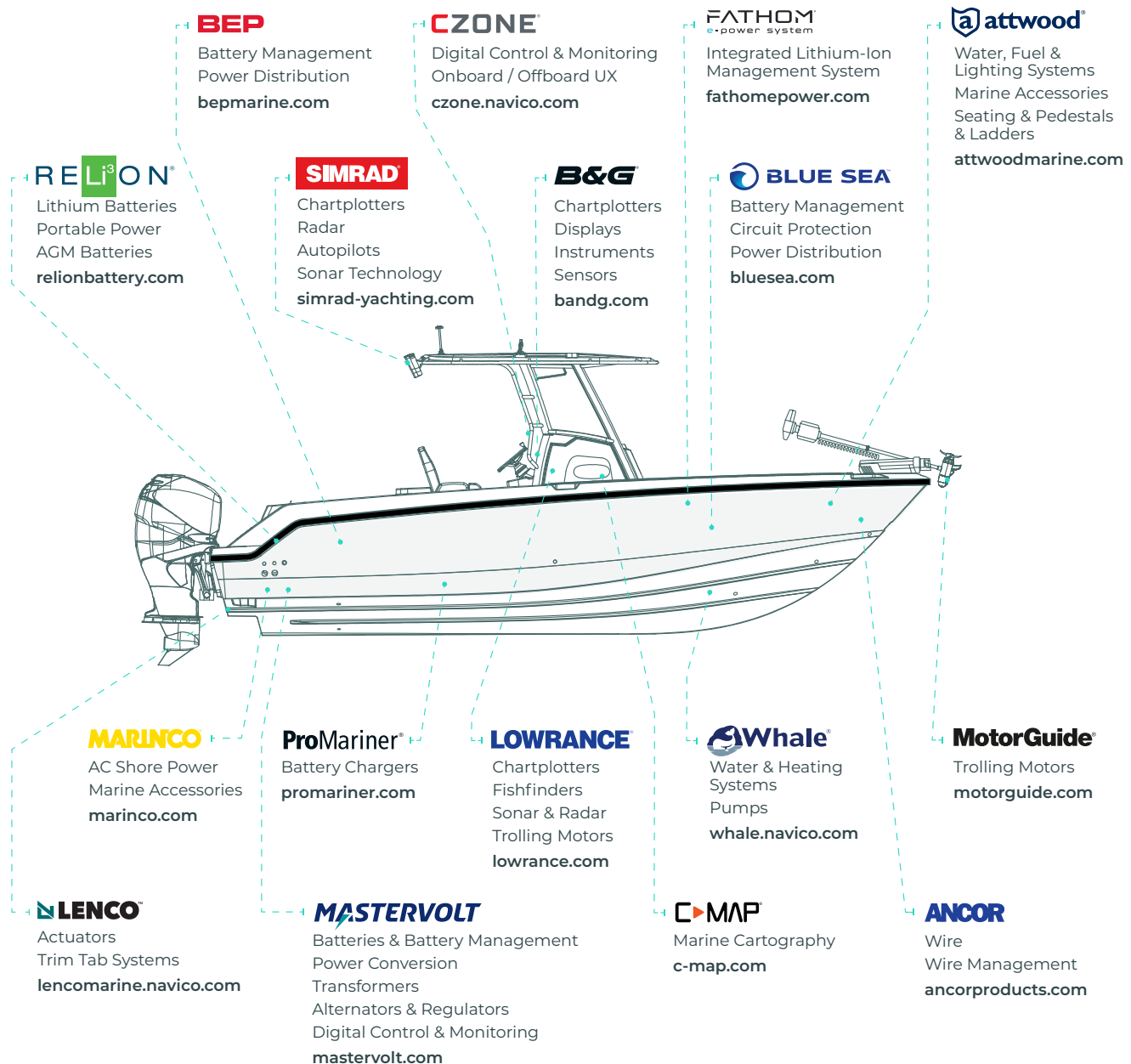
Precision. Confidence. Adventure.

 **LENCO**[™]

NAVICO™ GROUP

TAKING YOU FURTHER

Navico Group is the world's leading supplier of integrated systems and products to industries ranging from marine to recreational vehicle and beyond. We offer an unmatched portfolio comprised of industry-leading brands in power management, digital control & monitoring, networked devices and marine electronics.



See how far our innovations can take you at Navico.com



Why Lenco?

Because we're proven leaders in boat stability. Innovating for the smoothest, safest, most enjoyable on-the-water experiences.

PROVEN

With more than 30 years' expertise in developing market leading products, Lenco™ is an established leader in the Marine industry.

INNOVATIVE

The industry's foremost engineers are developing trim and surf systems that push the boundaries of what's achievable on the water.

CONNECTED

As part of Navico Group™, Lenco are uniquely positioned to deliver unprecedented levels of integration and connectivity.





Welcome to the World of Trim

Trim tabs provide lift to compensate for changes in speed, weight and sea state.

Trusted Safety

With more predictable movement through the water, you're better able to navigate the waves safely.

Ultimate Control

Added stability means you're in greater control of your vessel. Ultimately, this makes you a better skipper, providing you the ability to make confident adjustments to your boat's behavior.

Total Comfort

A smooth ride is ultimately more enjoyable for those on-board. By getting you on the plane faster, trim tabs help limit the impact of waves at all speeds.

Proven Durability

For three decades, Lenco has led the way in designing products that are built to last. From robust actuators to trim tabs with added electro-polished protection, Lenco products can be relied on time and time again, so you can relax and enjoy your time on the water.

TABLE OF CONTENTS

LENCO PRO CONTROL™

Pro Control Auto	8
NEW! Pro Control Auto System Kits	10
NEW! Pro Control Auto Keypad Kits	11
Pro Control Assist	12
NEW! Pro Control Assist System Kits	14
NEW! Pro Control Assist Keypad Kits	15
Dimensional Drawings for Pro Control	16
Pro Control (SD Pro) Actuators	17
Pro Control Accessories	18

SURF

Lenco Surf	20
NEW! SD Pro Actuators for Surf Applications	19

100 SERIES CONTROLS & SWITCHES

Standard Integrated Switch Kit	42
LED Integrated Switch Kit	42
LED Indicator (TWO-PIECE) Switch Kit	43
Double Rocker Switch Kit	43
Airboat Single Rocker Switch	44
Flybridge Standard Integrated Indicator Kits	44
Flybridge LED Integrated Indicator Kits	45
Flybridge LED (Two-Piece) Indicator Kits	45
Dimensional Drawings for 100 Series Switches	46

100 SERIES REPLACEMENT PARTS & ACCESSORIES

Replacement Blades	54
Mounting Brackets and Hardware	55
Parts & Accessories	56

100 SERIES ELECTRIC TRIM TAB KITS

24	Lenco Trim Tab Kits
26	Trim Tab Selection Guide
27	Standard Mount Trim Tab Kits
28	Edge Mount Trim Tab Kits
29	Standard & Edge Mount Trim Tab Kits (switch included)
30	Standard Performance Trim Tab Kits
31	Heavy Duty (HD) Performance Trim Tab Kits
32	Extreme Duty (XD) Performance Trim Tab Kits
33	High Performance (HP) Trim Tab Kits
34	Super Strong Trim Tab Kits
35	LS-Limited Space Trim Tab Kits
36	Airboat Trim Tab Kit
37	Hybrid Trim Tab Kits
37	Bennett® Hydraulic-to-Lenco Electric Conversion Kit
38	Dimensional Drawings for Trim Tab Kits

100 SERIES ACTUATORS & HATCH LIFTS

50	Trim Tab Actuator Guide
50	Replacement HD Heavy-Duty Actuator
51	100 Series Actuators
52	Electric Hatch Lifts

INDEX

57	Index
----	-------

NEW FROM Lenco – PRO CONTROL

Nothing Comes Close.

Pro Control Auto delivers best-in-class auto-levelling for unprecedented precision, control, and comfort on the water.





NEW! Pro Control Overview	8
NEW! Pro Control System	10
NEW! Pro Control Keypad Controller Kits	11
NEW! Pro Control Keypad Flybridge Kits	12
Pro Control Replacement Actuators	13
Pro Control Accessories	14
SD Pro Overview	16
SD Pro Actuators	17

PRO CONTROL AUTO

Nothing Comes Close.

Pro Control will change the way you think about auto levelling, providing unprecedented levels of precision, control, and comfort on the water.



*vs baseline testing °vs competitors (competitive boat automatic stabilization systems)

Keep a Level Head

74% better auto-levelling

Pro Control is a game-changer for auto-levelling and boat stability, boasting a best-in-class 74% improvement*. Pro Control automatically counteracts an array of dynamic running conditions including weight shifts, keeping you and your passengers on an even keel.

Slam No More

24% less impact

Wave goodbye to the dreaded "thuds" and "slams" caused by impact, and move through water with unparalleled ease. Averaging an industry-best 24% reduction of re-entry impact*, Pro Control makes for a smoother, more comfortable/cushioned ride.

Confidence Offshore

Tame rough seas

Have the confidence to cross the inlet and head out to deeper waters. Pro Control rivals far more expensive products when running offshore, delivering an impressive 15% pitch reduction° in dynamic seas.

React Faster

Control in an instant

Fast response times provide enhanced control to the helm, making near-instant adjustments in response to dynamic sea conditions. In addition, improved holeshoot gets boaters on plane faster, providing superior comfort and visibility sooner, with a rapid transition into auto-levelling.

Built To Last

5-year warranty

Just because we're more affordable doesn't mean you have to compromise on build quality. Best-in-class 5-year warranty gives peace of mind to both boatbuilders and end users. Simple maintenance extends lifespan.

Enhanced Control

with Mercury® SmartCraft®

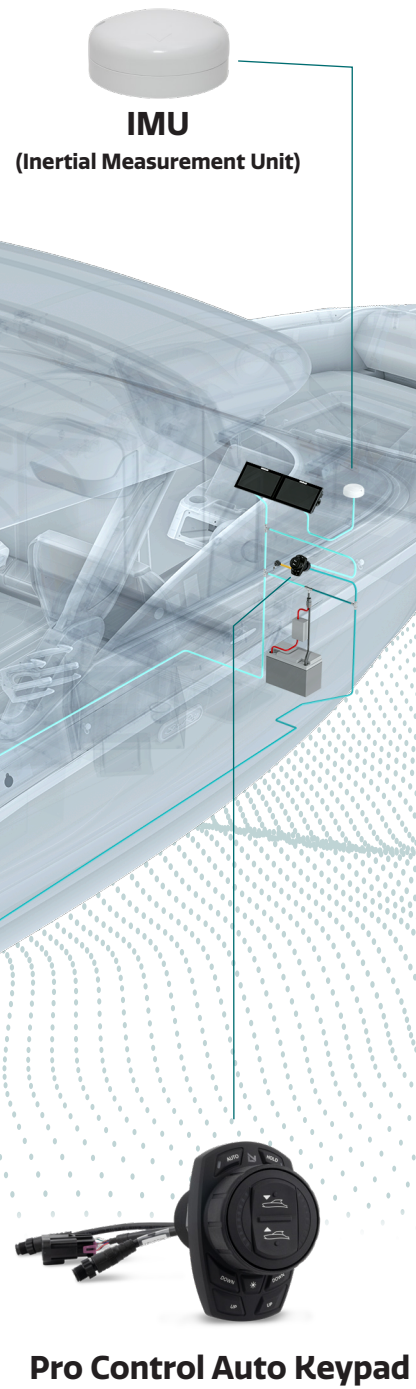
Beyond standard (non-Mercury) engine integration, Pro Control connects with Mercury® SmartCraft® devices to enhance your experience by transforming your acceleration, offering superior levelling and control as you launch and slow down to idle.

Pro Control **Auto** System Diagram

Full Pro Control Auto Kit Options

See page 10.

— Lenco 2k
— CAN Protocol



SD Pro Actuators and Trim Tabs

NEW! Pro Control Auto System Kits

12V System

Pro Control Auto delivers industry-leading auto-levelling for unprecedented precision, control, and comfort on the water.

Standard Mount Trim Tabs—The original Trim Tab design, ideal for center console fishing boats to cuddy cabin cruisers.

Edge Mount Trim Tabs—Designed for boat applications where a lower actuator mounting height is desirable. Actuator mounts at the trailing edge of the blade giving it a 3" (7.6 cm) lower mounting height on 12" (30.5 cm) long blades. All edges are turned up for added strength and style.

IDEAL FOR BOATS:
16' to 30' (4.9 m to 9.1 m)



Standard
15182-107



Edge Mount
15186-107

Kits include:

- (1) Pro Control Auto Keypad (15174-107)
- (1) Pro Control Auto IMU (15180-001)
- (2) 12-gauge 304 (2.7 mm) stainless steel standard finish blades:
 - **Standard blades** - with a 5/8" (1.6 cm) flared trailing edge.
 - **Edge Mount blades** - with 1" (2.5 cm) turned up edges and a 5 degree taper on both sides to the trailing edge & 1/8" (3.2 mm) diameter hinge pin.
- (2) 2.25" Stroke SD Pro Actuators, 11.5" pin to pin (15189-001)
- (6) Micro C Tee Connector (15209-101)
- Micro C Power Cable with fuse and ground (15197-101)
- (2) 6' Micro C Drop cables (15199-101), (1) 15' (15200-101) and (1) 25' (15201-101) Micro C Drop cables
- (2) 6 Pin Detusch to Micro C Actuator Network Adapter Cable (15205-101)
- (2) 3' (.91 m) Pro Control Actuator Power Pigtail (15206-101)
- (2) Wake Signal Adapter for Non-Mercury Systems (15207-101)
- (2) Corrosion proof Upper Mounting Brackets with gland seal (15193-101)
- (2) Corrosion proof Lower Mounting Brackets (15194-101)
- Lenco 2K Backbone Kit

Standard

L" X W"	Boat Length	Hinge Height	Min Transom Height	Keypad	Retail Box	Part #
9" x 12"	16'-25'	2" (5.1 cm)	14" (35.6 cm)	Auto	-	15182-107
12" x 12"	17'-30'	2" (5.1 cm)	14" (35.6 cm)	Auto	-	15184-107

Edge Mount

L" X W"	Boat Length	Hinge Height	Min Transom Height	Keypad	Retail Box	Part #
12" x 12"	17'-30'	2" (5.1 cm)	11" (27.9 cm)	Auto	-	15186-107



Pro Control Accessories

See pages 18-19.

Dimensional Drawings

See page 16.

NEW! Pro Control Auto Keypad Kits

Pro Control Auto Keypad with auto-levelling capabilities provides intuitive, precision controls for your trim tab system. CAN communication protocol comes as standard, making integration and installation simple.



Helm Control/IMU
15172-107



Flybridge Control
15176-107

Helm Control/IMU Kit Includes:

- (1) Pro Control Auto Keypad (15174-107)
- (1) Pro Control Auto IMU (15180-001)
- (3) Micro C Drop Cables: (2) 6' (1.82 m) (15199-101), (1) 15' (4.57 m) (15200-101)
- (1) Wake Signal Adapter for Non-Mercury systems (15207-101)
- (3) Micro C Tee Connectors (15209-101)

Flybridge Control Kit Includes:

- (1) Pro Control Auto Keypad (15174-107)
- (1) Micro C Drop Cable: 6' (1.82 m) (15199-101)
- (1) Micro C Tee Connector (15209-101)

Helm Control/IMU

Description	Retail Box	Part #
Auto Controller Kit	-	15172-107
Auto Replacement Keypad	-	15174-107

Flybridge Control

Description	Retail Box	Part #
Auto Flybridge Keypad Kit	-	15176-107
Auto Replacement Flybridge Keypad	-	15178-107



Pro Control Accessories

See pages 18-19.



Dimensional Drawings

See page 16.



Dimming Control – Day and Night Mode

Dimming control lets you control the lighting across all Mercury® DTS equipment and select displays with a single button press.

Please Note: Pro Control Keypads are compatible with SD Pro Actuators only.

PRO CONTROL ASSIST

The control is in your hands.

Pro Control Assist offers a manual control option, featuring a smart, sleek dial controller, designed to provide a class-leading user interface. Get all the benefits of Pro Control including holeshot assist, with CAN communication protocol and the ability to store preferred positions for your trim tabs.



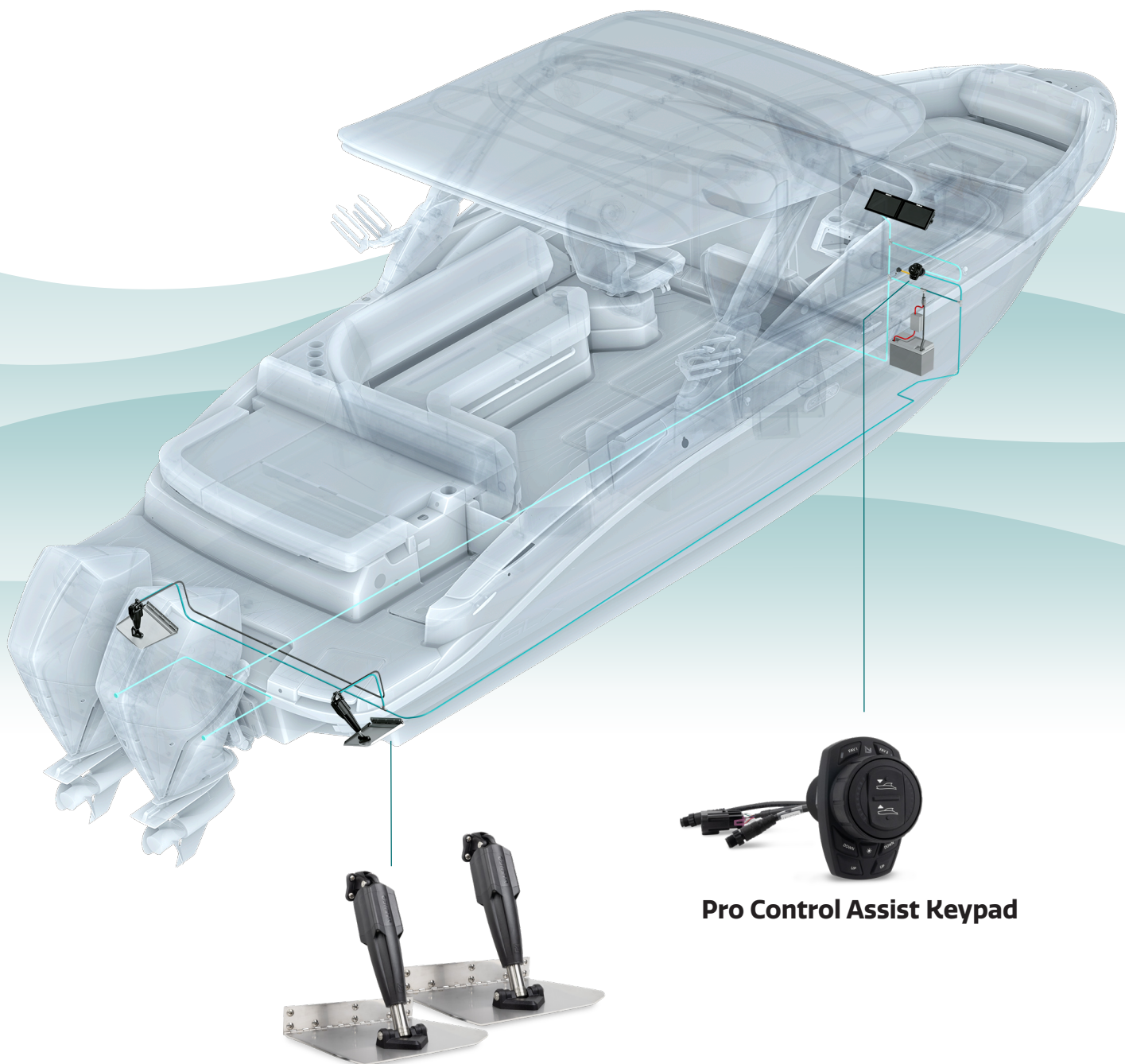
- CAN communication protocol as standard
- Hole Shot Assist
- Class leading user interface with Intuitive keypad design
- Day/Night Mode for global dim on selected MFDs
- Programmable Memory Position Recall
- Built to Last – Easy Maintenance

Pro Control Assist System Diagram

Full Pro Control Assist Options

See page 14.

- Lenco 2k
- CAN Protocol



Pro Control Assist Keypad

SD Pro Actuators and Trim Tabs

NEW! Pro Control Assist System Kits

12V System

Pro Control Assist is the manual control option which features a smart, sleek dial controller, providing a best-in-class user interface.

Standard Mount Trim Tabs—The original Trim Tab design, ideal for center console fishing boats to cuddy cabin cruisers.

Edge Mount Trim Tabs—Designed for boat applications where a lower actuator mounting height is desirable. Actuator mounts at the trailing edge of the blade giving it a 3" (7.6 cm) lower mounting height on 12" (30.5 cm) long blades. All edges are turned up for added strength and style.

IDEAL FOR BOATS:

16' to 30' (4.9 m to 9.1 m)



**Standard
15181-106**



**Edge Mount
15185-106**

Kits include:

- (1) Pro Control Assist Keypad (15175-106)
- (2) 12-gauge 304 (2.7 mm) stainless steel standard finish blades:
 - **Standard blades** - with a 5/8" (1.6 cm) flared trailing edge.
 - **Edge Mount blades** - with 1" (2.5 cm) turned up edges and a 5 degree taper on both sides to the trailing edge) & 1/8" (3.2 mm) diameter hinge pin.
- (2) 2.25" Stroke SD Pro Actuators, 11.5" pin to pin (15189-001)
- (5) Micro C Tee Connector (15209-101)
- Micro C Power Cable with fuse and ground (15197-101)
- (2) 6' Micro C Drop cables (15199-101), (1) 25' (15201-101) Micro C Drop cables
- (2) 6 Pin Detusch to Micro C Actuator Network Adapter Cable (15205-101)
- (2) 3' (.91 m) Pro Control Actuator Power Pigtail (15206-101)
- (2) Wake Signal Adapter for Non-Mercury Systems (15207-101)
- (2) Corrosion proof Upper Mounting Brackets with gland seal (15193-101)
- (2) Corrosion proof Lower Mounting Brackets (15194-101)
- Lenco 2K Backbone Kit

Standard

L" X W"	Boat Length	Hinge Height	Min Transom Height	Keypad	Retail Box	Part #
9" x 12"	14'-18'	2" (5.1 cm)	14" (35.6 cm)	Assist	-	15181-106
12" x 12"	22'-30'	2" (5.1 cm)	14" (35.6 cm)	Assist	-	15183-106

Edge Mount

L" X W"	Boat Length	Hinge Height	Min Transom Height	Keypad	Retail Box	Part #
12" x 12"	16'-25'	2" (5.1 cm)	11" (27.9 cm)	Assist	-	15185-106



Pro Control Accessories

See pages 18-19.



Dimensional Drawings

See page 16.

NEW! Pro Control Assist Keypad Kits

Pro Control Assist Keypad with programmable memory position recall capabilities provides intuitive, precision controls for your trim tab system. CAN communication protocol comes as standard, making integration and installation simple.



2 programmable memory position recall options



Helm Control
15175-106



Flybridge Control
15177-107

Helm Control Kit Includes:

- (1) Pro Control Assist Keypad (15175-106)
- (2) Micro C Drop Cables, 6' (1.82 m) (15199-101)
- (1) Wake Signal Adapter for Non-Mercury Systems (15207-101)
- (2) Micro C Tee Connector (15209-101)

Flybridge Control Kit Includes:

- (1) Pro Control Assist Keypad (15175-107)
- (1) Micro C Drop Cable: 6' (1.82 m) (15199-101)
- (1) Micro C Tee Connector (15209-101)

Helm Control

Description	Retail Box	Part #
Assist Controller Kit	-	15173-106
Assist Replacement Keypad	-	15175-106

Flybridge Control

Description	Retail Box	Part #
Assist Flybridge Keypad Kit	-	15177-106
Assist Replacement Flybridge Keypad	-	15179-106



Pro Control Accessories

See pages 18-19.



Dimensional Drawings

See page 16.



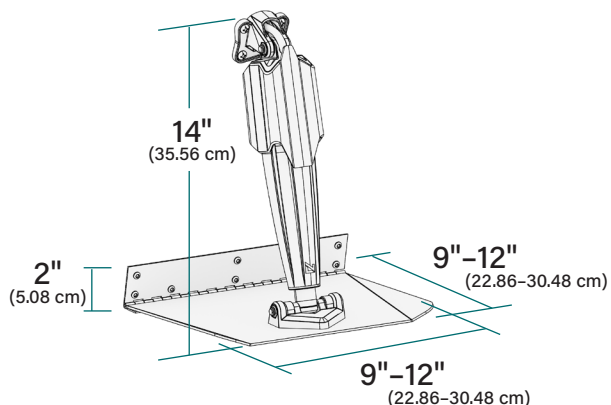
Dimming Control – Day and Night Mode

Dimming control lets you control the lighting across all Mercury® DTS equipment and select displays with a single button press.

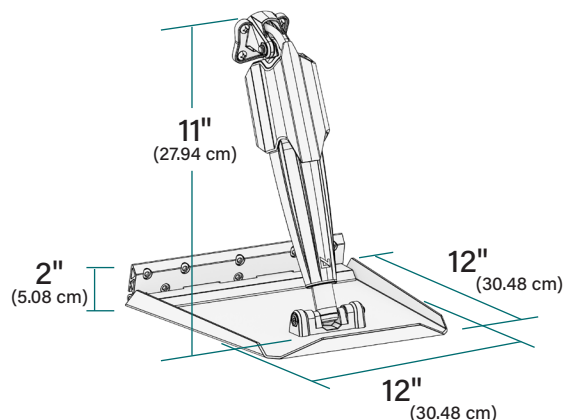
Please Note: Pro Control Keypads are compatible with SD Pro Actuators only.

Dimensional Drawings for Pro Control

Standard Mount Trim Tab Kits

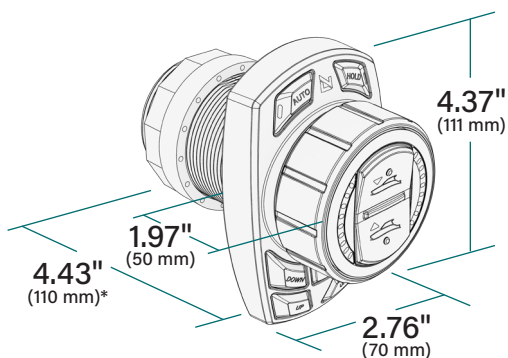


Edge Mount Trim Tab Kits



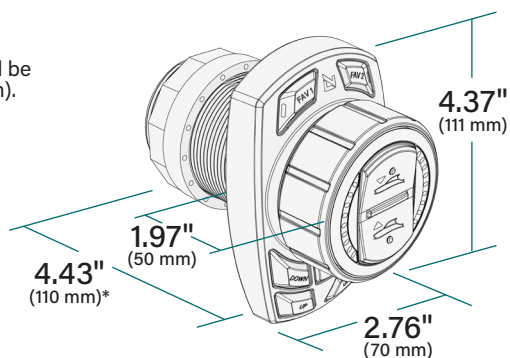
Note: Heights are approximate due to variability of transom angle.

Pro Control Keypads



Auto

Hole size should be 2-1/16" (53 mm).



Assist

*including wire allowance



Pro Control (SD Pro) Actuators

A core element of the Lenco Pro Control™ system is the SD Pro Actuator - engineered to offer best in-class connectivity, precise control and an unbeatable user experience.



10" Pin to Pin Actuator

- 2.25" Stroke

15187-001



10.5" Pin to Pin Actuator

- 2.25" Stroke

15188-001



11.5" Pin to Pin Actuator

- 2.25" Stroke

15189-001



12" Pin to Pin Actuator

- 4.25" Stroke

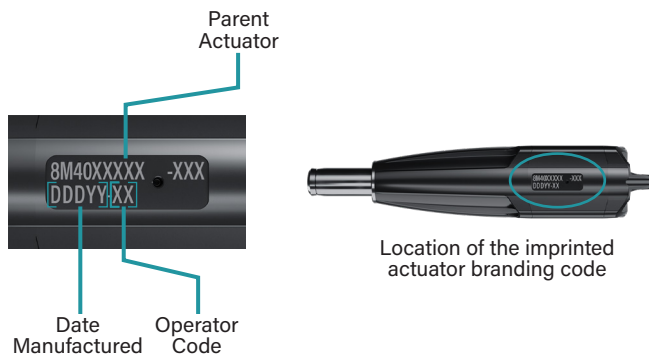
15190-001

For further information on SD Pro Actuators

See page 21.

SD Pro Actuator Replacement Guide

Before contacting Lenco Customer Service, please have the Parent Actuator number, Date Manufactured and Operator Code on hand. Lenco Customer Service can be reached at info.lencomarine@navicogroup.com.



Please Note: SD Pro Actuators are compatible with Pro Control Keypads only.

Pro Control Accessories



General Spares



Pro Control Auto Replacement IMU

15180-001



Remote Gland Seal Kit

15191-101



Actuator Hardware Kit

15195-101

Micro C Spares



Micro C Tee Connector

15209-101



Micro C Terminating Resistor Kit (M/F)

15196-101



Micro C Power Cable with Fuse and Ground

15197-101



Micro C Drop Cable

15198-101	2' (0.61 m)
15199-101	6' (1.83 m)
15200-101	15' (4.57 m)
15201-101	25' (7.62 m)



6 Pin Detusch to Micro C Actuator Network Adapter Cable

15205-101

Connector Spares



Wake Signal Adapter for Non-Mercury Systems

15207-101



Mercury® SmartCraft® Interface Cable

15202-101	36" (0.91 m)
15203-101	60" (1.52 m)
15204-101	120" (3.05 m)



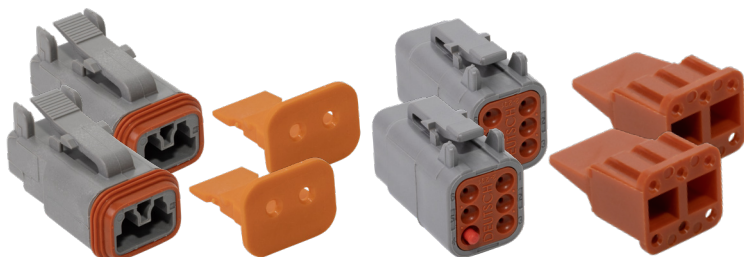
Pro Control Power Pigtail, 36" (0.91 m)

15206-101

Pro Control Accessories



Connector Spares



Deutsch Connector Kit for Pro Control Actuator Pair

15208-101

Bracket Spares



Upper and Lower Mounting Bracket Kit with Hardware

15192-101



Upper Mounting Bracket

15193-101



Lower Mounting Bracket

15194-101

LENCO SURF

Create precise, repeatable wake with Lenco.



Precision-engineered Surfing

The key to better wake surfing? Practice and repetition. That's why the SD Pro is precision engineered to deliver a repeatable wake time after time. Simply dial in your number and get surfing – cutting set-up time to a minimum. And improved response times mean you can tweak things in an instant.

Simple installation

The Lenco team has designed the SD Pro actuator to be easier than ever to install in your wake boats, using CAN communication protocol with no power distribution module (PDM) required. And once it's installed, it's there to be relied upon, season after season, with a 5-year warranty as standard.

Best-in-class connectivity

We know the importance of intelligent, interconnected systems. That's why the SD Pro is built on new CAN-based hardware, to make integration seamless and simple.



Make It Yours

The only actuator to enable full white label production, the SD Pro allows you to put your own stamp on things. By implementing your own logos and colouring, the SD Pro helps build your brand and deliver a more seamless user experience. Ultimately it also helps you deliver a better performing, better looking boat to your customers.



NEW! SD Pro Actuators for Surf Applications

Build the ultimate watersports machine with the new SD Pro actuator. The cutting-edge actuator empowers boaters to create precise, repeatable wake. Best-in-class connectivity and total customization deliver an unbeatable user experience in your own image.

- Fast, precise, repeatable wake enabled through inductive sensors – within 1% accuracy
- Seamless integration into surf systems, with CAN-based hardware enabling smart actuation
- MFD integration available
- Simple installation and intuitive commissioning
- Expanded Mercury® integration, connecting directly with SmartCraft®, providing improved and superior control logic
- Fault and diagnostic capability with overload protection



10" Pin to Pin Actuator

- 2.25" Stroke
- 15187-001

10.5" Pin to Pin Actuator

- 2.25" Stroke
- 15188-001

11.5" Pin to Pin Actuator

- 2.25" Stroke
- 15189-001

12" Pin to Pin Actuator

- 4.25" Stroke
- 15190-001

Description	Stroke	Volts	Mounting Hardware	Cable	Part #
10" Pin to Pin	2.25" Stroke (5.72 cm)	12V	3/8"	6'	15187-001
10.5" Pin to Pin	2.25" Stroke (5.72 cm)	12V	3/8"	6'	15188-001
11.5" Pin to Pin	2.25" Stroke (5.72 cm)	12V	3/8"	6'	15189-001
12" Pin to Pin	4.25" Stroke (10.80 cm)	12V	3/8"	6'	15190-001



100 SERIES TRIM TABS

Backed by 30 years of reliable and robust actuation, Lenco's 100 Series Trim Tabs Systems make your boat ride smoother, drier, faster and safer.



100 SERIES ELECTRIC TRIM TABS KITS



Customization	18
Trim Tab Selection Guide	19
Standard Mount Trim Tab Kits	20
Edge Mount Trim Tab Kits	21
Standard & Edge Mount Trim Tab Kits	22
Standard Performance Trim Tab Kits	23
Heavy Duty (HD) Performance Trim Tab Kits	24
Extreme Duty (XD) Performance Trim Tab Kits	25
High Performance (HP) Trim Tab Kits	26
Super Strong Trim Tab Kits	27
LS-Limited Space Trim Tab Kits	28
Airboat Trim Tab Kit	29
Hybrid Trim Tab Kits	30
Bennett® Hydraulic-to-Lenco Electric Conversion Kit	30

LENCO TRIM TAB KITS

Everything you
need for stability
in one box.



Electro-Polished

A wide range of our trim tabs are available in an electro-polished finish. This is a process that improves the surface finish of the blades and provides greater protection from the elements.



What is Electro-Polishing?

Electro-Polishing is a process that improves the surface finish of our 304 stainless steel trim tab blades. Electro-Polishing delivers a smoother, more reflective surface than our standard mill finish and improves surface cleanability. Electro-Polishing dissolves free iron, inclusions, and embedded particles from the surface of our trim tabs. Lenco's in-house process improves the near-surface chemistry of the material, and promotes the formation of an improved corrosion resistant surface layer.

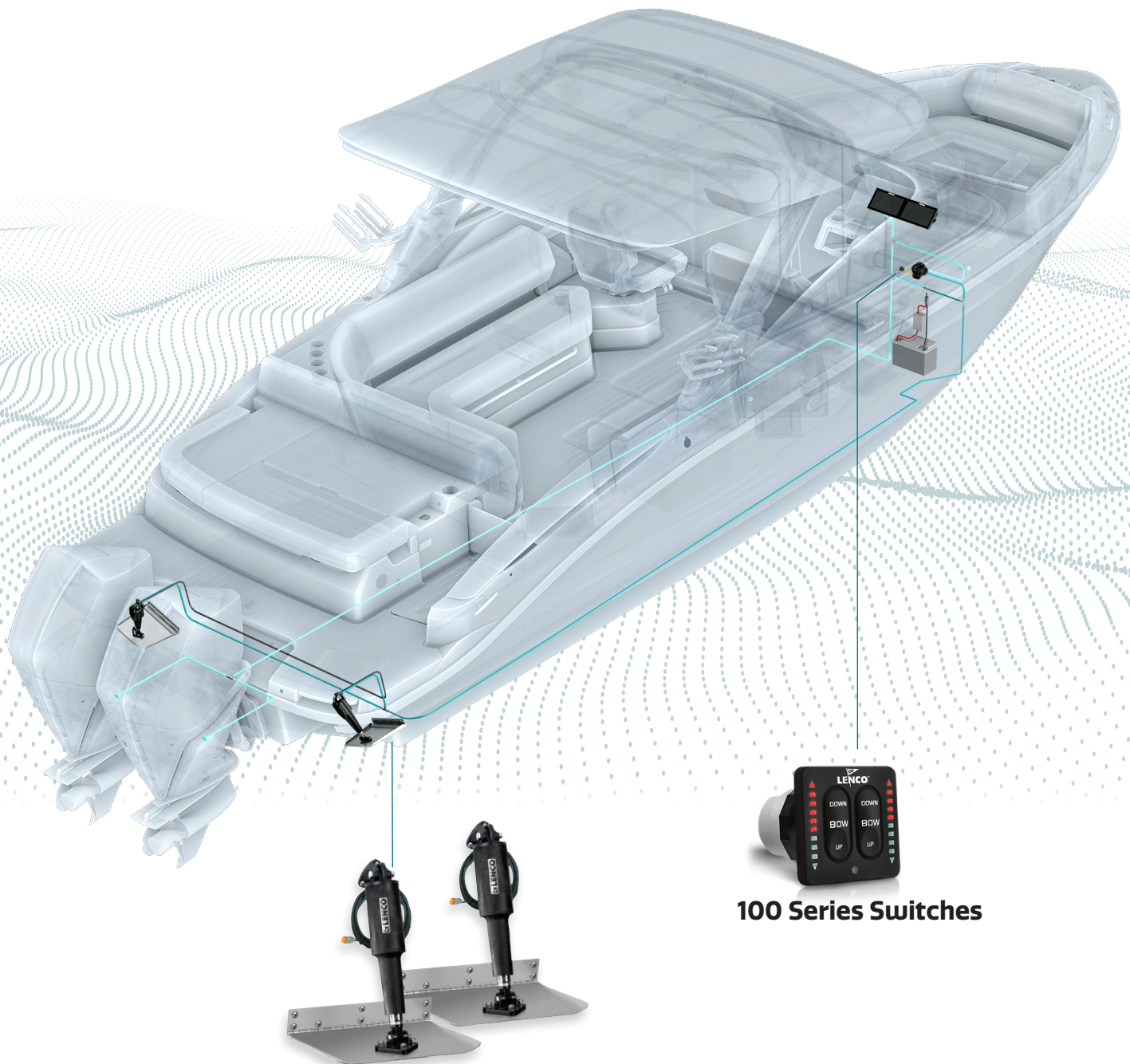
Benefits:

- Removes iron and potential contaminants from the surface of our trim tabs.
- Removes a small amount of material from the surface of our trim tab blades, also removing small burrs.
- Enhances the chromium and nickel content providing added resistance against environmental factors such as air, fresh and salt water.
- Polishes areas inaccessible by any other polishing methods.
- Provides a clean and smooth surface that is aesthetically pleasing.

100 Series System Diagram

Full 100 Series Kit Options

See page 27-37.



100 Series Switches

100 Series Actuators and Trim Tabs

Trim Tab Selection Guide

Lenco carries a variety of trim tabs to meet your needs. Use the guide below to choose the trim tab for the best solution for your boat.

1. Look below to find the type of boat you have.
2. At the top of the that table, find the width of your boat. Then go down the chart until you find the color option(s) available. Refer to the top of the table for the type.
3. Scan to the left to find out what size trim tab you need.

Runabout, Cabin Cruiser & Saltwater Fish

Standard Mount
 Standard Performance

Edge Mount
 Heavy Duty

[illegible]

High Speed Cruisers

■ Hybrid

		15'	20'	25'	30'	35'	40'	45'	50'	60'	70'	80'
4"x18"	28+ knots											
4"x24"	28+ knots											
4"x30"	28+ knots											

Performance – Salt Water

■ Extreme Duty
■ High Performance

[illegible]

Cabin Cruisers & Trawlers

■ Super Strong

[illegible]

Standard Mount Trim Tab Kits

12V System

The series that started the electric revolution! Our original Trim Tab design and still the most popular series we build. Ideal for center console fishing boats to cuddy cabin cruisers.

Blades are constructed of 12-gauge (2.7 mm) laser cut 304 stainless steel with a 5/8" (1.6 cm) flared trailing edge & 1/8" (3.2 mm) diameter hinge pin. Upper and lower high impact corrosion proof mounting brackets with mechanical cable gland seal.

IDEAL FOR BOATS:
14' to 69' (4.3 m to 21 m)



Standard Finish
15001-101



Electro-Polished Finish
15113-101

Kits include:

- (2) 12-gauge 304 stainless steel standard or electro-polished blades
- (2) 15054-001 actuators with 6' (1.8 m) leads and Deutsch connectors
- (2) 30133-103 actuator extension wiring harnesses - 20' (6.1 m) length
- (2) 15085-001 upper mounting brackets with gland seal
- (2) 50014-001 lower mounting brackets

Standard

L" X W"	Boat Length	Hinge Height	Min Transom Height	Retail Box	Part #
9" x 9"	14'-18'	2" (5.1 cm)	14" (35.6 cm)	Yes	15000-101
9" x 12"	16'-25'	2" (5.1 cm)	14" (35.6 cm)	Yes	15001-101
9" x 18"	22'-30'	2" (5.1 cm)	14" (35.6 cm)	-	15002-101
9" x 24"	26'-40'	1" (2.5 cm)	14" (35.6 cm)	-	15003-101
9" x 30"	30'-50'	1" (2.5 cm)	14" (35.6 cm)	-	15004-101
9" x 36"	34'-65'	1" (2.5 cm)	14" (35.6 cm)	-	15005-101
12" x 12"	17'-30'	2" (5.1 cm)	14" (35.6 cm)	Yes	15007-101
12" x 18"	26'-36'	2" (5.1 cm)	14" (35.6 cm)	-	15008-101
12" x 24"	30'-44'	1" (2.5 cm)	14" (35.6 cm)	-	15009-101
12" x 30"	34'-54'	1" (2.5 cm)	14" (35.6 cm)	-	15010-101
12" x 36"	38'-69'	1" (2.5 cm)	14" (35.6 cm)	-	15011-101

Electro-polished

L" X W"	Boat Length	Hinge Height	Min Transom Height	Retail Box	Part #
9" x 12"	16'-25'	2" (5.1 cm)	14" (35.6 cm)	Yes	15113-101
12" x 12"	17'-30'	2" (5.1 cm)	14" (35.6 cm)	Yes	15114-101



100 Series Accessories

See pages 55-56.



Switch kits sold separately

See pages 42-45.



Dimensional Drawings

See page 38.

Edge Mount Trim Tab Kits

12V System

Designed for boat applications where a lower actuator mounting height is desirable. Actuator mounts at the trailing edge of the blade giving it a 1/2" (1.3 cm) lower mounting height on 9" (22.9 cm) long blades & 3" (7.6 cm) lower mounting height on 12" (30.5 cm) long blades. All edges are turned up for added strength and style.

The Edge Mount blades are constructed of 12-gauge (2.7 mm) laser cut 304 stainless steel with 1" (2.5 cm) turned up edges and a 5 degree taper on both sides to the trailing edge, & 1/8" (3.2 mm) diameter hinge pin. Upper and lower high impact corrosion proof mounting brackets with mechanical cable gland seal.

IDEAL FOR BOATS:
14' to 36' (4.3 m to 11 m)



15016-101
Standard Finish



15116-101
Electro-Polished Finish

Kits include:

- (2) 12-gauge 304 stainless steel standard finish blades
- (2) 15054-001 actuators with 6' (1.8 m) leads and Deutsch connectors
- (2) 30133-103 actuator extension wiring harnesses - 20' (6.1 m) length
- (2) 15085-001 upper mounting brackets with gland seal
- (2) 50014-001 lower mounting brackets

Standard

L" X W"	Boat Length	Hinge Height	Min Transom Height	Retail Box	Part #
9" x 9"	14'-18'	2" (5.1 cm)	13.5" (34.3 cm)	Yes	15013-101
9" x 12"	16'-25'	2" (5.1 cm)	13.5" (34.3 cm)	Yes	15014-101
12" x 9"	14'-18'	2" (5.1 cm)	11" (27.9 cm)	Yes	15015-101
12" x 12"	17'-30'	2" (5.1 cm)	11" (27.9 cm)	Yes	15016-101
12" x 18"	26'-36'	2" (5.1 cm)	11" (27.9 cm)	-	15017-101

Electro-polished

L" X W"	Boat Length	Hinge Height	Min Transom Height	Retail Box	Part #
12" x 9"	14'-18'	2" (5.1 cm)	11" (27.9 cm)	Yes	15115-101
12" x 12"	17'-30'	2" (5.1 cm)	11" (27.9 cm)	Yes	15116-101



100 Series Accessories

See pages 55-56.



Switch kits sold separately

See pages 42-45.



Dimensional Drawings

See page 38.

Standard & Edge Mount Trim Tab Kits (switch included)

12V System

Everything you need in one box! The Standard and Edge Mount trim tab kit with the added benefit of having the integrated switch choice and power connector all included.

The Standard blades are constructed of 12-gauge (2.7 mm) laser cut 304 stainless steel with a 5/8" (1.6 cm) flared trailing edge & 1/8" (3.2 mm) diameter hinge pin. Edge mount blades are constructed of 12-gauge (2.7 mm) laser cut 304 stainless steel with a 1" (2.5 cm) turned up edges and a 5 degree taper on both sides to the trailing edge & 1/8" (3.2 mm) diameter hinge pin. Upper and lower high impact corrosion proof mounting brackets with mechanical cable gland seal. Switch included.

IDEAL FOR BOATS:

14' to 69' (4.3 m to 21 m)



15001-101
Standard Mount



15113-101
Edge Mount

Kits include:

- Switch Kit - Choose Double Rocker, Standard Integrated or LED Integrated
- (2) 12-gauge 304 stainless steel standard finish blades
- (2) 15054-001 actuators with 6' (1.8 m) leads and Deutsch connectors
- (2) 30133-103 actuator extension wiring harnesses - 20' (6.1 m) length
- (2) 15085-001 upper mounting brackets with gland seal
- (2) 50014-001 lower mounting brackets

Three switches to choose from



Double Rocker

Details on
page 43

**Standard
Integrated**

Details on
page 42

LED Integrated

Details on
page 42

Standard

L" X W"	Kit Description	Switch Kit Included	Part #
9" x 12"	Standard	Double Rocker Switch	15101-104
9" x 12"	Standard	Standard Integrated Switch	15104-102
9" x 12"	Standard	LED Integrated Switch	15108-103
12" x 12"	Standard	Double Rocker Switch	15103-104
12" x 12"	Standard	Standard Integrated Switch	15105-102
12" x 12"	Standard	LED Integrated Switch	15109-103

Edge Mount

L" X W"	Kit Description	Switch Kit Included	Part #
12" x 12"	Edge Mount	Double Rocker Switch	15102-104
12" x 12"	Edge Mount	Standard Integrated Switch	15106-102
12" x 12"	Edge Mount	LED Integrated Switch	15110-103



100 Series Accessories

See pages 55-56.



Dimensional Drawings

See page 38.

Standard Performance Trim Tab Kits

12V System

Our first series designed specifically for performance. This system comes equipped with a thicker reinforced hinge and complimented with an Electro-Polished finish for added quality and protection.

Blades are constructed of Electro-Polished 12-gauge (2.7 mm) laser cut 304 stainless steel with 1" (2.5 cm) turned up edges and a 5 degree taper on the inside, heavy duty hinge with 1/4" (6.4 mm) diameter hinge pin.

IDEAL FOR BOATS:

13' to 40' (4 m to 12.2 m)



**15037-101
Standard**



Kits include:

- (2) 12-gauge 304 stainless steel Electro-Polished blades
- (2) 15054-001 actuators with 6' (1.8 m) leads & Deutsch connectors
- (2) 30133-103 actuator extension wiring harnesses - 20' (6.1 m) length
- (2) 15085-001 upper mounting brackets with gland seal
- (2) 50014-001 lower mounting brackets

Standard

L" X W"	Boat Length	Hinge Height	Min Transom Height	Part #
9" x 9"	13'-20'	2" (5.1 cm)	13.5" (34.3 cm)	15034-101
9" x 12"	16'-26'	2" (5.1 cm)	13.5" (34.3 cm)	15035-101
12" x 9"	16'-26'	2" (5.1 cm)	11" (27.9 cm)	15036-101
12" x 12"	18'-32'	2" (5.1 cm)	11" (27.9 cm)	15037-101
14" x 12"	19'-34'	2" (5.1 cm)	11" (27.9 cm)	15038-101
16" x 12"	20'-36'	2" (5.1 cm)	11" (27.9 cm)	15039-101
18" x 14"	22'-40'	2" (5.1 cm)	11" (27.9 cm)	15040-101



Thicker Reinforced Hinge



100 Series Accessories

See pages 55-56.



Switch kits sold separately

See pages 42-45.



Dimensional Drawings

See page 38.

Heavy Duty (HD) Performance Trim Tab Kits

12V System

The Heavy Duty series is designed & built for the boats that need extra strength to support them in rougher water at higher speeds.

Blades are constructed of Electro-Polished 12-gauge (2.7 mm) laser cut 304 stainless steel with 1" (2.5 cm) turned up edges and a 5 degree taper on the inside, heavy duty hinge with 1/4" (6.4 mm) diameter hinge pin. Full transom back plate with welded on stainless steel upper & adjustable lower actuator mounting brackets, 5/16" (.8 cm) stainless steel mounting bolts & mechanical strain-relief cable seals. 3.75" (9.5 cm) sacrificial anodes installed.

IDEAL FOR BOATS:
18' to 42' (5.5 m to 12.8 m)

**SHIPPED FULLY
ASSEMBLED**

**5
YEAR
WARRANTY**



**15043-101
Heavy-duty**

Kits include:

- (2) 12-gauge 304 stainless steel Electro-Polished blades
- (2) 15055-001 XD Extreme Duty actuators with 6' (1.8 m) leads & Deutsch connectors
- (2) 30133-103 actuator extension wiring harnesses - 20' (6.1 m) length
- **Note: Boat-mounting hardware to be supplied by the customer**

Heavy-duty

L" X W"	Boat Length	Min Transom Height	Part #
12" x 12"	18'-34'	10.5" (26.7 cm)	15041-101
14" x 12"	19'-36'	10.5" (26.7 cm)	15042-101
16" x 12"	20'-38'	10.5" (26.7 cm)	15043-101
18" x 14"	22'-42'	10.5" (26.7 cm)	15044-101



100 Series Accessories

See pages 55-56.



Switch kits sold separately

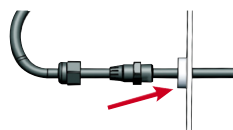
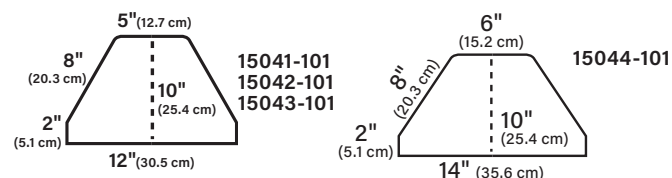
See pages 42-45.



Dimensional Drawings

See page 38.

Back Plate Dimensions



The actuator leads pass through the water-tight mechanical strain-relief cable seal and the back plate before passing through the transom. This applies to all products with back plates.

Extreme Duty (XD) Performance Trim Tab Kits

12V System

This kit is similar to our Heavy Duty Performance series with a thicker, stronger blade for those boaters who run hard in extreme conditions.

Blades are constructed of Electro-Polished 10-gauge (3.4 mm) laser cut 304 stainless steel with 1" (2.5 cm) turned up edges and a 5 degree taper on the inside, heavy duty hinge with 3/8" (9.5 mm) diameter hinge pin. Full transom back plate with mechanical strain-relief cable seals, welded on stainless steel upper & adjustable lower actuator mounting brackets, 3/8" (9.5 mm) stainless steel mounting bolts. 3.75" (9.5 cm) sacrificial anodes installed.

IDEAL FOR BOATS:

20' to 40' (6.1 m to 12.2 m) single actuator
23' to 50' (7 m to 15.2 m) dual actuator

**SHIPPED FULLY
ASSEMBLED**

**5
YEAR
WARRANTY**



15045-101
Single Actuator



15046-101
Dual Actuator

Kits include:

- (2) 10-gauge 304 stainless steel Electro-Polished blades
- (2) 15056-001 XD Extreme Duty actuators with 6' (1.8 m) leads & Deutsch connectors
- **Note: Boat-mounting hardware to be supplied by the customer.**
- **Note: Actuator extension harnesses not in kits, must be purchased separately (2 required for single actuator and 4 required for dual actuator). See page 56.**

Single Actuator

L" X W"	Boat Length	Min Transom Height	Part #
17" x 12"	20'-40'	10.5" (26.7 cm)	15045-101

Dual Actuator

L" X W"	Boat Length	Min Transom Height	Part #
19" x 14"	23'-45'	10.5" (26.7 cm)	15046-101
24" x 14"	25'-50'	10.5" (26.7 cm)	15047-101



Switch kits sold separately
See pages 42-45.

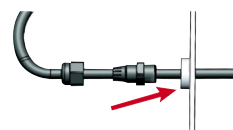
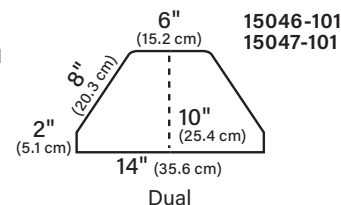
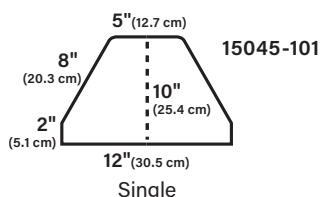


Actuator Extension Harnesses sold separately
See page 56.



Dimensional Drawings
See page 38.

Back Plate Dimensions



The actuator leads pass through the water-tight mechanical strain-relief cable seal and the back plate before passing through the transom. This applies to all products with back plates.

High Performance (HP) Trim Tab Kits

12V System

This powerful, unique series is designed for multiple engine applications with limited transom space. The contoured blade design allows for extra space for engines to turn as well as decreasing and preventing cavitation to the props.

Blades are constructed of Electro-Polished 7-gauge (4.6 mm) laser cut 304 stainless steel with heavy duty hinge with 3/8" (9.5 mm) diameter hinge pin. Full transom back plate with mechanical strain-relief cable seals, welded on stainless steel upper & adjustable lower actuator mounting brackets, 3/8" (9.5 mm) stainless steel mounting bolts. 3.75" (9.5 cm) sacrificial anodes installed.

IDEAL FOR BOATS:

16' to 40' (4.9 m to 12.2 m) single actuator
24' to 52' (7.3 m to 15.8 m) dual actuator

**SHIPPED FULLY
ASSEMBLED**

**5
YEAR
WARRANTY**



**15049-101
Single Actuator**



**15051-101
Dual Actuator**

Kits include:

- (2) 7-gauge 304 stainless steel Electro-Polished blades
- (2) 15056-001 XD Extreme Duty actuators with 6' (1.8 m) leads & Deutsch connectors
- **Note: Boat-mounting hardware to be supplied by the customer.**
- **Note: Actuator extension harnesses not in kits, must be purchased separately (2 required for single actuator and 4 required for dual actuator). See page 56.**

Single Actuator

L" X W"	Boat Length	Min Transom Height	Part #
14" x 12"	16'-32'	10.5" (26.7 cm)	15048-101
18" x 12"	20'-40'	10.5" (26.7 cm)	15049-101

Dual Actuator

L" X W"	Boat Length	Min. Transom Height	Part #
21" x 14"	24'-42'	10.5" (26.7 cm)	15050-101
25" x 14"	28'-46'	10.5" (26.7 cm)	15051-101
29" x 14"	30'-52'	10.5" (26.7 cm)	15068-101



Switch kits sold separately

See pages 42-45.



Actuator Extension Harnesses sold separately

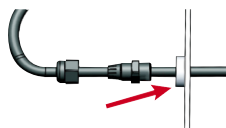
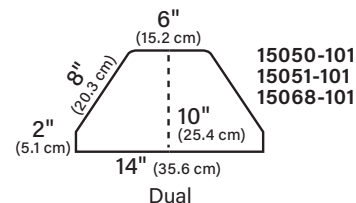
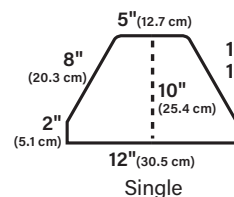
See page 56.



Dimensional Drawings

See page 38.

Back Plate Dimensions



The actuator leads pass through the water-tight mechanical strain-relief cable seal and the back plate before passing through the transom. This applies to all products with back plates.

Super Strong Trim Tab Kits

12V & 24V Systems

This Super Strong design is for sport fishing, large cruising and commercial vessels. This series has a completely flat blade design which reduces spray giving you a clean, dry ride.

Blades are constructed of 7-gauge (4.6 mm) laser cut 304 stainless steel with 3/8" (9.5 mm) diameter hinge pin. High impact corrosion proof upper and lower mounting brackets with mechanical gland cable seal, 5/16" (.8 cm) upper and 3/8" (9.5 mm) lower stainless steel mounting bolts. 3.75" (9.5 cm) sacrificial anodes installed.

IDEAL FOR BOATS:

24' to 52' (7.3 m to 15.8 m) single actuator
35' to 80' (10.6 m to 24.4 m) dual actuator



15018-101
Single Actuator



15022-101
Dual Actuator

Kits include:

- (2) 7-gauge 304 stainless steel standard finish blades
- (2) 15055-001 12 Volt (15062-001 for 24 Volt) XD Extreme Duty actuators with 6' (1.8 m) & Deutsch connectors
- (2) 15140-001 120 Lower Mounting Brackets
- **Note: Actuator extension harnesses not in kits, must be purchased separately (2 required for single actuator and 4 required for dual actuator). See page 56.**

Single Actuator

Voltage	L" X W"	Boat Length	Part #
12V	12" x 18"	24' - 40'	15018-101
12V	12" x 24"	27' - 44'	15019-101
12V	12" x 30"	30' - 48'	15020-101
12V	12" x 36"	33' - 52'	15021-101
24V	12" x 18"	24' - 40'	15026-101
24V	12" x 24"	27' - 44'	15027-101
24V	12" x 30"	30' - 48'	15028-101
24V	12" x 36"	33' - 52'	15029-101

Dual Actuator

Voltage	L" X W"	Boat Length	Part #
12V	16" x 24"	35' - 50'	15022-101
12V	16" x 30"	40' - 60'	15023-101
12V	16" x 36"	45' - 70'	15024-101
12V	16" x 42"	50' - 80'	15025-101
24V	16" x 24"	35' - 50'	15030-101
24V	16" x 30"	40' - 60'	15031-101
24V	16" x 36"	45' - 70'	15032-101
24V	16" x 42"	50' - 80'	15033-101



Switch kits sold separately

See pages 42-45.



Actuator Extension Harnesses sold separately

See page 56.



Dimensional Drawings

See page 38.

LS-Limited Space Trim Tab Kits

12V System

Engineered to fit behind ladders. This unique design gives you all the benefits of a standard tab in an ultra compact design.

Blades are constructed of a stronger 11-gauge laser cut 304 stainless steel and 3/8" (9.5 mm) diameter hinge pin. Upper and lower high impact corrosion proof mounting brackets with mechanical cable gland seal.

IDEAL FOR BOATS:

14' to 25' (4.3 m to 7.6 m)



15126-101
Standard Actuator



15088-101
XDS Actuator

Kits include:

- (2) 11-gauge 304 stainless steel blades with option of standard finish or electro-polished finish
- (2) actuators with 6' (1.8 m) lead and Deutsch connectors
- (2) 30133-103 actuator extension wiring harnesses - 20' (6.1 m) length
- (2) 15085-001 upper mounting brackets with gland seal
- Lower mounting brackets included

Standard Actuator

L" X W"	Min Transom Height	Hinge Height	Actuators In Kit	Blade Finish	Part #
4" x 12"	14.5" (36.8 cm)	2" (5.1 cm)	15054-001	Standard	15125-101
4" x 12"	14.5" (36.8 cm)	2" (5.1 cm)	15054-001	Electro-Polished	15126-101

XDS Actuator

L" X W"	Min Transom Height	Hinge Height	Actuators In Kit	Blade Finish	Part #
4" x 12"	13" (33 cm)	2" (5.1 cm)	15057-001	Standard	15052-101
4" x 12"	13" (33 cm)	2" (5.1 cm)	15057-001	Electro-Polished	15088-101



100 Series Accessories

See pages 55-56.



Switch kits sold separately

See pages 42-45.



Dimensional Drawings

See page 38.



Airboat Trim Tab Kit

12V System

The world's first Airboat specific design. The planing surface provides greater lift and less drag. Engineered to prevent the tab from digging in during hard turns resulting in a safer ride.

Blade is constructed of 12-gauge (2.7 mm) laser cut 304 stainless steel with a welded on stainless steel adjustable lower actuator mounting bracket & 1/8" (3.2 mm) diameter hinge pin. High impact corrosion proof upper mounting bracket with mechanical cable gland seal.



Kit includes:

- (1) 12-gauge 304 stainless steel standard finish blade with 2" (5.1 cm) hinge height
- (1) actuator with 6' (1.8 m) lead and Deutsch connector
- (1) 30133-002 actuator extension wiring harness - 14' (4.3 m) length
- (1) 15085-001 upper mounting bracket with gland seal
- Lower mounting bracket included

L" X W"	Actuator In Kit	Description	Part #
9" x14"	15055-001	Airboat Kit without Switch	15112-101



100 Series Accessories

See pages 55-56.



Airboat Switch sold separately

See page 44.



Dimensional Drawings

See page 38.

Hybrid Trim Tab Kits

12V & 24V Systems

Engineered to combine the benefits and features of our Limited Space and Super Strong series. This ultra-compact design utilizes a greater deflection angle creating substantial lift with less surface area.

Blades constructed of 7-gauge (4.6 mm) laser cut 304 stainless steel with 3/8" (9.5 mm) diameter hinge pin. High impact corrosion proof upper and lower mounting brackets with mechanical gland cable seal, 5/16" (.8 cm) upper and lower stainless steel mounting bolts. Also includes (2) 3.75" (9.5 cm) sacrificial anodes installed.

IDEAL FOR BOATS:

30' to 60' (9.1 m to 18.3 m)



15146-101

Kits include:

- (2) 7-gauge 304 stainless steel blades with standard finish
- (2) Standard actuators with 6' (1.8 m) lead and Deutsch connectors
- (2) 15085-001 upper mounting brackets with gland seal
- (2) 50014-001 lower mounting brackets
- **Note: Actuator extension harnesses not in kits, must be purchased separately (2 required). See page 42.**

Voltage	L" X W"	Boat Length	Part #
12V	4" x 18"	30'-44'	15145-101
12V	4" x 24"	42'-52'	15146-101
12V	4" x 30"	48'-60'	15147-101
24V	4" x 18"	30'-44'	15148-101
24V	4" x 24"	42'-52'	15149-101
24V	4" x 30"	48'-60'	15150-101



Switch kits sold separately

See pages 42-45.



Actuator Extension Harnesses sold separately

See page 56.



Dimensional Drawings

See page 38.

Bennett® Hydraulic-to-Lenco Electric Conversion Kit

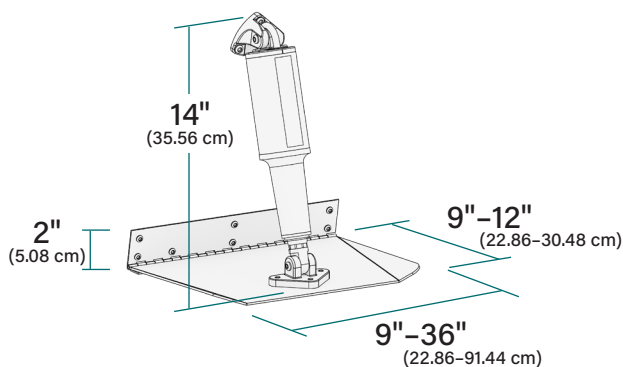
Now you don't have to buy a new boat or an entire new set of trim tabs to get all the advantages of the latest in trim tab technology. Lenco's high-performance instant response actuators are now available to retro fit any boat equipped with the standard length Bennett hydraulic cylinders.

Voltage	L" X W"	Boat Length	Part #
12V	4" x 18"	30'-44'	15145-101
12V	4" x 24"	42'-52'	15146-101

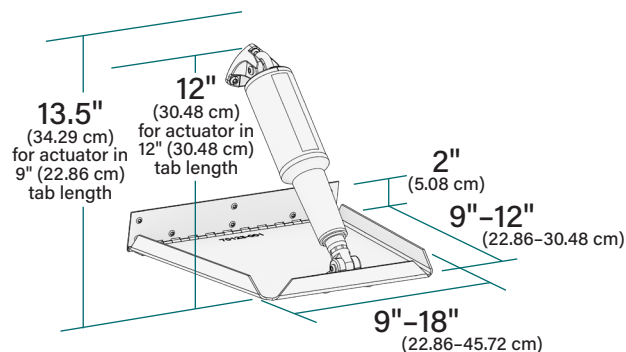
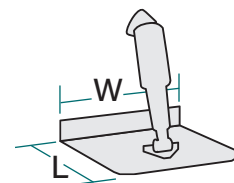


Dimensional Drawings for Trim Tab Kits

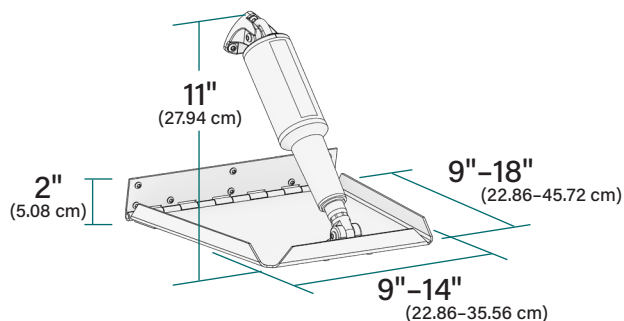
Standard Mount



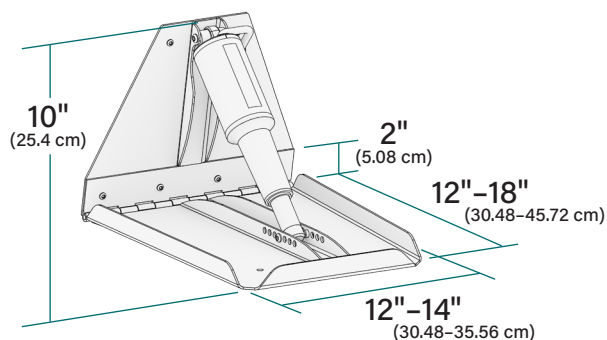
Edge Mount



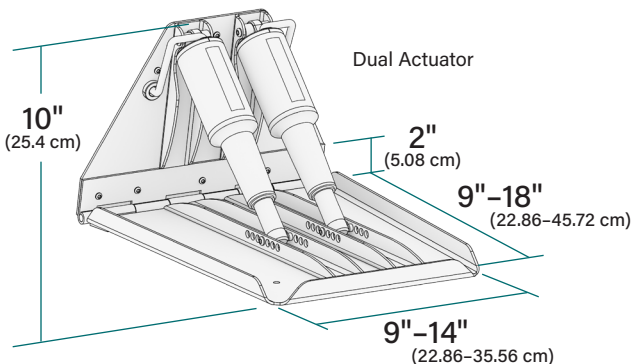
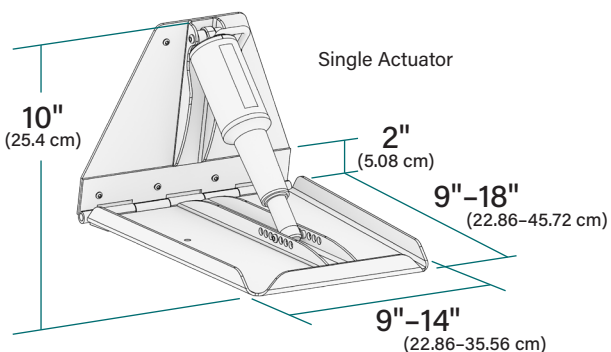
Standard Performance



Heavy Duty (HD) Performance



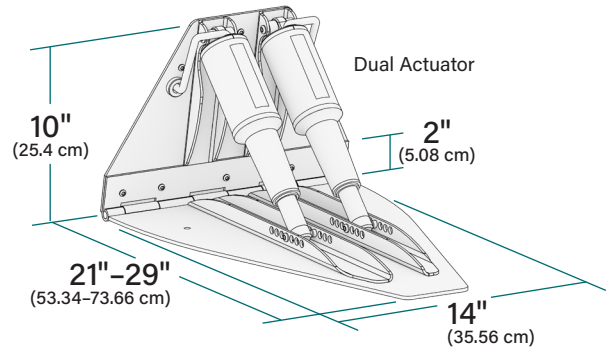
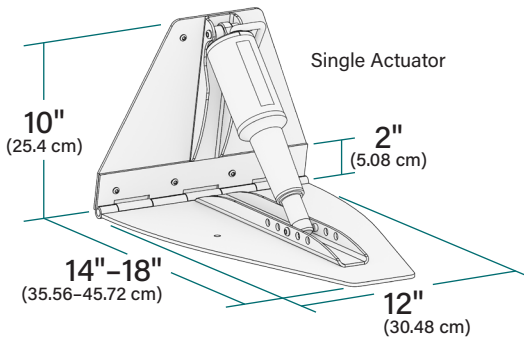
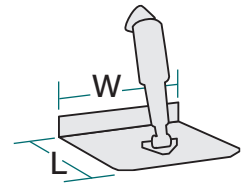
Extreme Duty (XD) Performance



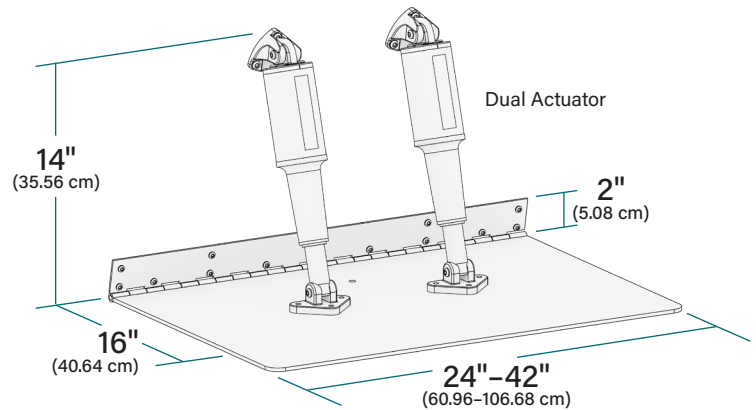
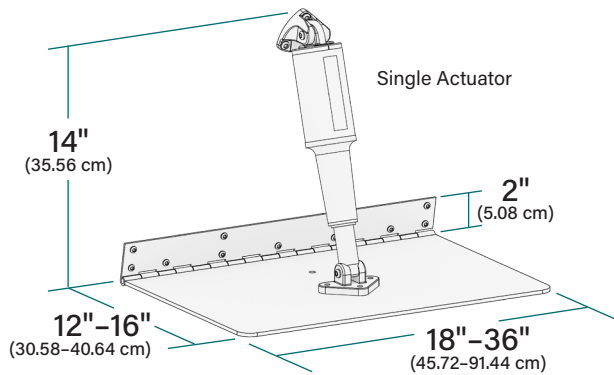
Note: Heights are approximate due to variability of transom angle.

Dimensional Drawings for Trim Tab Kits

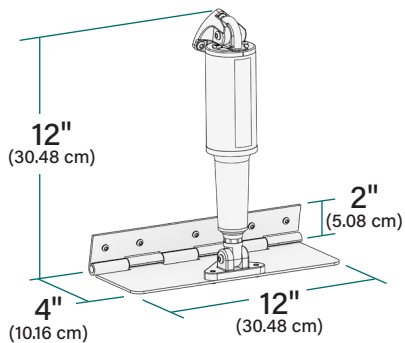
High Performance



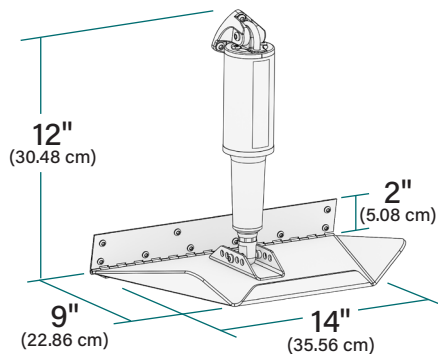
Super Strong



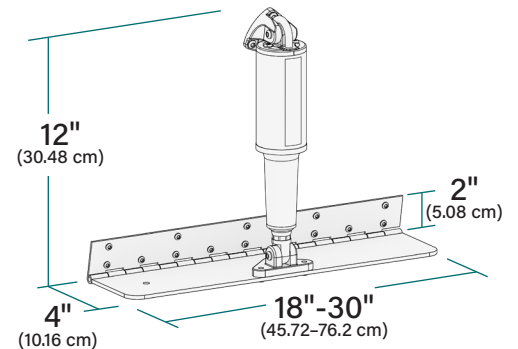
LS-Limited Space



Airboat



Hybrid



Note: Heights are approximate due to variability of transom angle.

100 SERIES CONTROLS & SWITCHES

Lenco controls and switches allow users to position and balance their boat with ease and are precision engineered for superior response times.



100 SERIES CONTROLS & SWITCHES



Standard Integrated Switch Kit	34
LED Integrated Switch Kit	34
LED Indicator (TWO-PIECE) Switch Kit	35
Double Rocker Switch Kit	35
Airboat Trim Tab Rocker Switch	36
Flybridge Standard Integrated Indicator Kits	36
Flybridge LED Integrated Indicator Kits	37
Flybridge LED (Two-Piece) Indicator Kits	37

Standard Integrated Switch Kit

12 & 24 Volt

The standard (All-In-One) integrated tactile switch improves accuracy and integrates the control box functionality into the keypad bezel.



15169-001
Single Actuator



Features

- Simple, quick, Plug & Play installation
- Instant response
- Built-in retractor
- Low profile keypad design
- Self-contained keypad with waterproof Plug & Play Deutsch connectors
- Wiring harness length 30" (76.2 cm) from the back of the switch bezel
- 36" power pigtail
- 2-1/16" hole cut-out size, overall keypad size of 2.75" x 2.75"
- 4.08" clearance required from the back of the keypad's mounting location

Single Actuator

Description	Power Pigtail	Part #
Standard Integrated Switch Kit	36" (91.4 cm)	15169-001



Replacement Pigtails

See page 56.



Dimensional Drawings

See page 46.

LED Integrated Switch Kit

12 & 24 Volt

The LED indicator (All-In-One) integrated tactile switch for use with single or dual actuator systems, improves accuracy and integrates the control box functionality into the keypad bezel.



15170-001
Single Actuator



15171-001
Dual Actuator



Features

- Simple, quick, Plug & Play installation
- Instant response
- Built-in retractor
- Low profile keypad design
- Self-contained keypad with waterproof Plug & Play Deutsch connectors
- Wiring harness length 30" (76.2 cm) from the back of the switch bezel
- 36" power pigtail (single actuator) or 72" power pigtail (dual actuator)
- 2-1/16" hole cut-out size, overall keypad size of 2.75" x 2.75"
- 4.08" clearance required from the back of the keypad's mounting location
- Two high-intensity LED Indicator displays show the exact position of your trim tabs at all times
- Photo Eye for optimum viewing in all light conditions
- Backlit keypad for optimum viewing at night
- Self-Check feature (single)

Single Actuator

Description	Power Pigtail	Part #
LED Integrated Switch Kit	36" (91.4 cm)	15170-001

Dual Actuator

Description	Power Pigtail	Part #
LED Integrated Switch Kit	72" (1.8 m)	15171-001



Replacement Pigtails

See page 56.



Dimensional Drawings

See page 46.

ATTENTION: REPLACEMENT KEYPADS & CONTROL BOXES FOR 2016 AND PRIOR SWITCHES ARE NOT COMPATIBLE WITH THESE SWITCH KITS.

LED Indicator (TWO-PIECE) Switch Kit

12 & 24 Volt

The LED Two Piece Kits are for use with single or dual actuator systems with a shortened bezel requiring less depth to mount. Functionality is built into the separate control box and must be mounted remotely.



15270-001
Single Actuator



15271-001
Dual Actuator



Features

- Simple, quick, Plug & Play installation
- Instant response
- Built-in retractor
- Low profile keypad design
- Self-contained, solid state control box with waterproof Plug & Play Deutsch connectors
- 36" power pigtail (single actuator) or 72" power pigtail (dual actuator) for control box
- 2-1/16" hole cut-out size, overall keypad size of 2.75" x 2.75"
- 2.33" clearance required from the back of the keypad's mounting location
- Two high-intensity LED Indicator displays show the exact position of your trim tabs at all times
- Photo Eye for optimum viewing in all light conditions
- Backlit keypad for optimum viewing at night
- Self-Check feature (single)

Single Actuator

Description	Power Pigtail	Part #
LED Indicator (TWO-PIECE) Switch Kit	36" (91.4 cm)	15270-001
LED (TWO-PIECE) Keypad only		30343-001
(TWO-PIECE) Control box - Single		30340-001

Dual Actuator

Description	Power Pigtail	Part #
LED Indicator (TWO-PIECE) Switch Kit	72" (1.8 m)	15271-001
LED (TWO-PIECE) Keypad only		30343-001
(TWO-PIECE) Control box - Single		30340-001



Replacement Pigtails

See page 56.



Dimensional Drawings

See page 46.

ATTENTION: REPLACEMENT KEY PADS & CONTROL BOXES FOR 2016 AND PRIOR SWITCHES ARE NOT COMPATIBLE WITH THIS SWITCH KIT.

Double Rocker Switch Kit

12 & 24 Volt | Single & Dual Actuator Systems

Double Rocker Switch available for Standard Trim Tabs, Standard & HD Performance Tabs single or dual actuator systems. Does not have retractor feature.



10222-211D
Single Actuator



10221-211D
Dual Actuator



Kit Includes:

- #122 Carling Double Rocker Switch
- Plug and Play Deutsch Connectors
- 36" (91.4 cm) power pigtail (Single) and 72" (182.9 cm) power pigtail (Dual)
- Installation hardware included
- 2.25" hole cut-out size, overall keypad size of 2.75" x 2.75"

Single Actuator

Description	Power Pigtail	Part #
Double Rocker Switch Kit	36" (91.4 cm)	10222-211D

Dual Actuator

Description	Power Pigtail	Part #
Double Rocker Switch Kit	72" (1.8 m)	10221-211D



Replacement Pigtails

See page 56.



Dimensional Drawings

See page 46.

Airboat Single Rocker Switch

12 & 24 Volt

Our Airboat-specific single rocker switch is recommended for use with the Airboat Trim Tab Kit (Part no 15112-101).



Kit Includes:

- Single Rocker Switch
- Plug & Play Deutsch Connector
- 30" non-terminated power leads
- Installation hardware included

Description	Part #
Airboat Trim Tab Rocker Switch 12 & 24 Volt for Single Actuator Systems	15095-001



Dimensional Drawings

See page 46.

Flybridge Standard Integrated Indicator Kits

12 & 24 Volt

Add a second station Standard Keypad connecting to the (All-In-One) Integrated Tactile Switch Kit (Part no 15169-001) by plugging into the existing harness.



Kits Include:

- Flybridge Standard Keypad
- Shielded Harness 30097-xxx series

Keypad	Shielded Harness	Part #
Standard	10' (3 m)	11841-101
Standard	20' (6.1 m)	11841-102
Standard	30' (9.1 m)	11841-103
Standard	40' (12.2 m)	11841-104
Standard	50' (15.2 m)	11841-105
Second station keypad only		30326-001



Replacement Flybridge Harnesses

See page 56.



Dimensional Drawings

See page 46.

ATTENTION: REPLACEMENT KEY PADS & CONTROL BOXES FOR 2016 AND PRIOR SWITCHES ARE NOT COMPATIBLE WITH THIS SWITCH KIT.

Flybridge LED Integrated Indicator Kits

12 & 24 Volt

Add a second station LED Keypad connecting to the (All-In-One) Integrated Tactile Switch Kit (Part no 15170-001 and/or 15171-001) by plugging into the existing harness.



Kits Include:

- Flybridge LED Keypad
- Shielded Harness 30097-xxx series

Keypad	Shielded Harness	Part #
LED	10' (3 m)	11841-001
LED	20' (6.1 m)	11841-002
LED	30' (9.1 m)	11841-003
LED	40' (12.2 m)	11841-004
LED	50' (15.2 m)	11841-005
Second station keypad only		30325-001



Replacement Flybridge Harnesses

See page 56.



Dimensional Drawings

See page 46.

Flybridge LED (Two-Piece) Indicator Kits

12 & 24 Volt

Add a second station LED Keypad connecting to the (All-In-One Two Piece) Integrated Tactile Switch Kit (Part no 15270-001 and/or 15271-001) by plugging into the Y Connector harness.



Kits Include:

- Flybridge LED Keypad
- Shielded Harness 30097-xxx series
- Y Connector (See page 56)

Keypad	Shielded Harness	Part #
LED	10' (3 m)	11941-001
LED	20' (6.1 m)	11941-002
LED	30' (9.1 m)	11941-003
LED	40' (12.2 m)	11941-004
LED	50' (15.2 m)	11941-005
Second station keypad only		30325-001
Replacement Y Connector		30209-001



Replacement Flybridge Harnesses

See page 56.



Dimensional Drawings

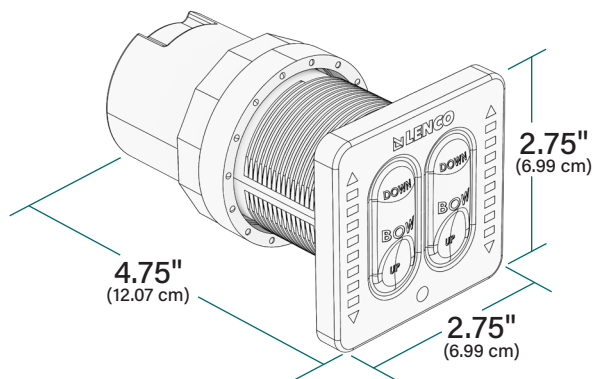
See page 46.

ATTENTION: REPLACEMENT KEY PADS & CONTROL BOXES FOR 2016 AND PRIOR SWITCHES ARE NOT COMPATIBLE WITH THESE SWITCH KITS.

Dimensional Drawings for 100 Series Switches

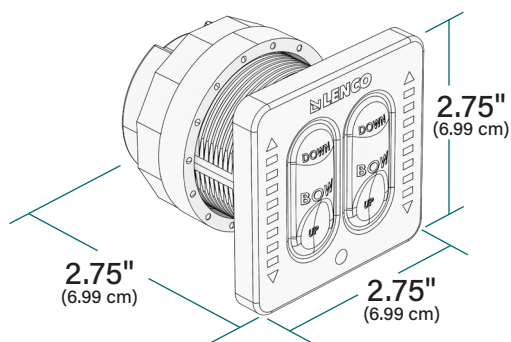
Integrated

Standard and LED Integrated Switch Kits



LED Indicator

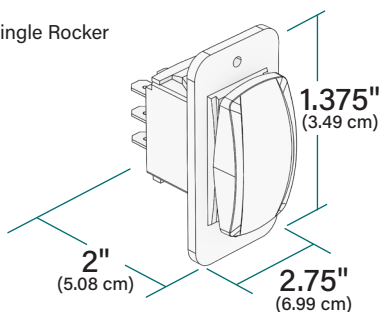
LED Indicator Switch Kit, Flybridge Standard & LED Integrated Indicator Switch Kits, and Flybride LED (2-piece) Indicator Kits



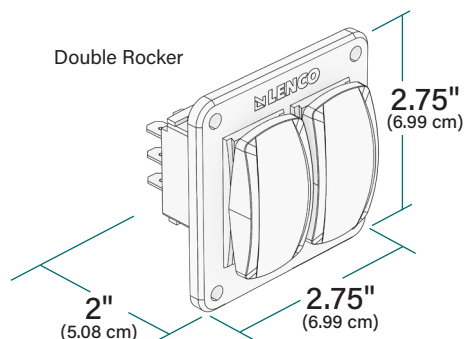
2.125" hole size required

Rocker

Single Rocker



Double Rocker







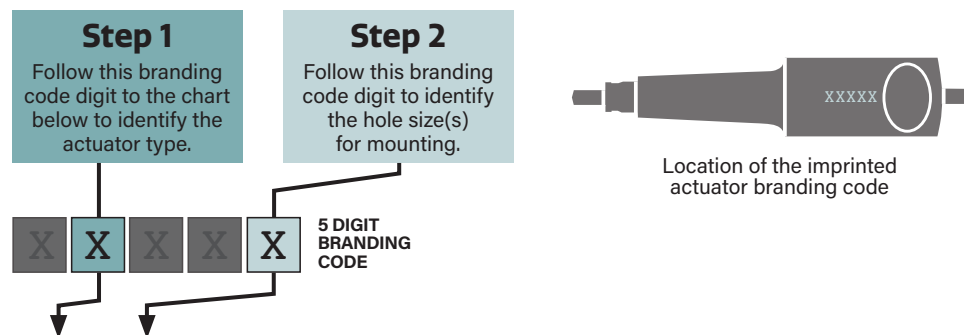
100 SERIES ACTUATORS & HATCH LIFTS



Trim Tab Actuator Guide	42
HD Heavy-Duty Actuator	42
Actuators	43
Electric Hatch Lifts	44
Lenco Hatch Lift Mounting	45
Optional Hatch Lift Accessories	45

100 Series Trim Tab Actuator Guide

Two easy steps to find your REPLACEMENT ACTUATOR.



Actuator Type	Hole Size	Actuator	Part #	Stroke Length	Voltage	Wire Length	Top Hole	End Hole
A	1	101	15054-001	2.25"	12V	6'	5/16"	5/16"
B	1	101	15061-001	2.25"	24V	6'	5/16"	5/16"
C	2	101XD	15055-001	2.25"	12V	6'	5/16"	5/16"
C	3	101XD	15056-001	2.25"	12V	6'	3/8"	3/8"
C	4	101XD	15056-002	2.25"	12V	6'	5/16"	3/8"
D	2	101XD	15062-001	2.25"	24V	6'	5/16"	5/16"
D	3	101XD	15063-001	2.25"	24V	6'	3/8"	3/8"
D	4	101XD	15063-002	2.25"	24V	6'	5/16"	3/8"
E	2	101XDS	15057-001	2.25"	12V	6'	5/16"	5/16"
E	3	101XDS	15058-001	2.25"	12V	6'	3/8"	3/8"
G	1	102S	15066-001	4.25"	24V	6'	5/16"	5/16"
F	1	102S	15059-001	4.25"	12V	6'	5/16"	5/16"
H	2	102XD	15067-001	4.25"	24V	6'	5/16"	5/16"
P,I,J	2	102HD	15060-001	4.25"	12V	6'	5/16"	5/16"
K,R	2	102HD	15131-001	4.25"	24V	6'	5/16"	5/16"

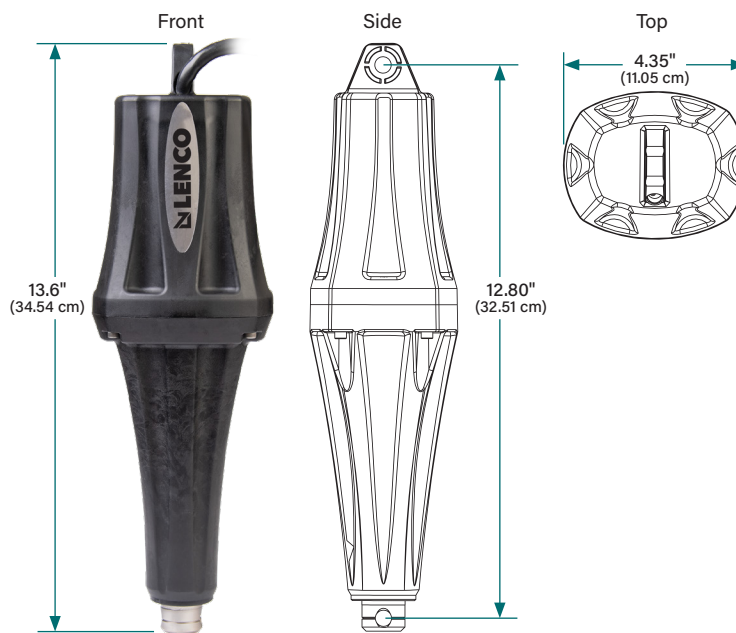
Replacement HD Heavy-Duty Actuator

The Lenco HD Heavy-Duty Actuator is designed to push twice the weight of the 101 and 102 actuators. It is intended to be used in conjunction with multiple Lenco trim tab systems. Boat lengths up to 80'.

Features:

- 1000 lbs push
- Highly durable Polyphthalamide housing
- Larger high torque motor
- Dual gear train parallel configuration
- 3/8" upper and lower mounting capability
- About a 1/2 inch longer than 102 XD
- 14 AWG gauge wire with Deutsch connectors
- Compatible with present switches

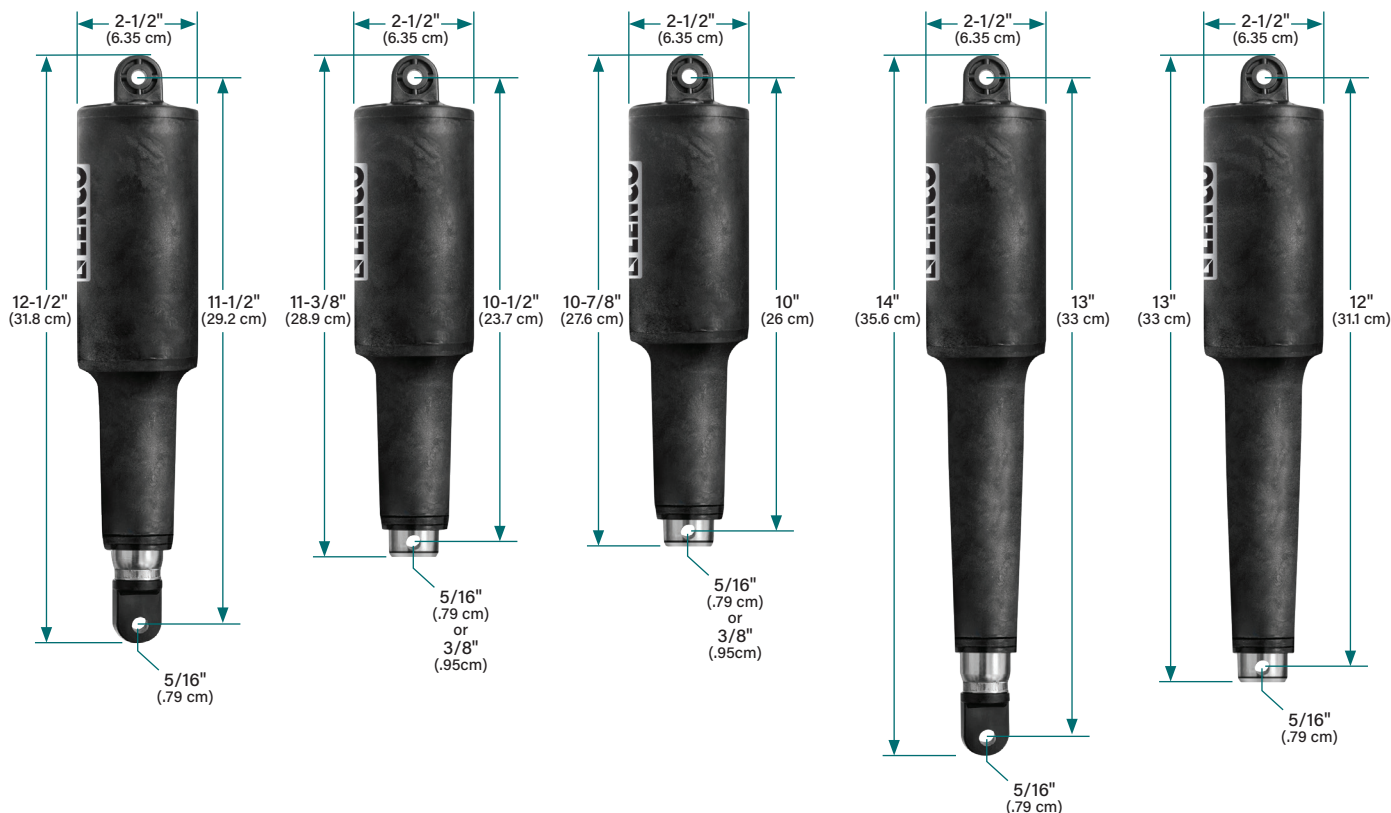
Description	Part #
Kit, HD Actuator, 2-1/4" stroke, 6' cable, 12V	15158-001
Kit, HD Actuator, 4-1/4" stroke, 6' cable, 12V	15160-001



15158-001

100 Series Actuators

Replacement Actuators are packaged with Deutsch connectors and all stainless steel mounting hardware. The entire Actuator is fully submersible, maintenance- free and sealed for life with a 5 year warranty.



101 Standard

The 101 Actuator is used in all Standard, Edge Mount and Standard Performance kits. 2-1/4" stroke - Overall length tip to tip = 12-1/2".

101 XD

The 101XD Actuator is used mostly with HD, XD, High Performance & Super Strong tabs. 2-1/4" stroke Overall length tip to tip = 11-3/8".

101 XDS (Short)

The 101XDS Actuator is used with OEM specific kits & limited space applications; it is the shortest actuator we manufacture. 2-1/4" stroke. Overall length tip to tip = 10-7/8".

102

The 102 Actuator is used with Trolling Tab systems sold prior to 2000 and OEM applications. 4-1/4" stroke. Overall length tip to tip = 14".

102 HD

The 102 HD Actuator is used with Trolling Tab systems sold after 2000 and OEM applications. 4-1/4" stroke. Overall length tip to tip = 13".

102 XD

Similar to 102 HD actuator. 24V, 5/16" mounting hardware with 6' cable & an overall length tip to tip of 13-1/4". (Not Shown)

Description	Stroke	Volts	Mounting Hardware	Cable	Part #
101 Standard	2-1/4" Stroke (5.715 cm)	12V	5/16"	6'	15054-001
		24V	5/16"	6'	15061-001
101 XD	2-1/4" Stroke (5.715 cm)	12V	5/16"	6'	15055-001
		12V	3/8"	6'	15056-001
		12V	5/16" upper & 3/8" lower	6'	15056-002
		24V	5/16"	6'	15062-001
		24V	3/8"	6'	15063-001
101 XDS	2-1/4" Stroke (5.715 cm)	12V	5/16"	6'	15057-001
		12V	3/8"	6'	15058-001
102	4-1/4" Stroke (10.795 cm)	12V	5/16"	6'	15059-001
		24V	5/16"	6'	15066-001
102 HD/XD	4-1/4" Stroke (10.795 cm)	12V	5/16"	6'	15060-001
		24V	5/16"	6'	15131-001
102 XD	4-1/4" Stroke (10.795 cm)	12V	5/16"	6'	15067-001



Electric Hatch Lifts

12 & 24 Volt Models

Lenco hatch lifts allow full or partial opening and closing of heavy hatches on your boat. Our range includes 12 and 24 volt models, available in various sizes to meet your specific application needs.

- Clear anodized aluminum tubing
- Sizes 4" (10.1 cm) through 30" (76.2) stroke and available in 12V & 24V
- Complete with 2' (61 cm) lead and Deutsch plug (see actuator extension harnesses on page 56)
- Clutchless ball screw design will not drift, never binds and runs in sync on dual lift applications
- In-line motor design delivers 500 lbs. (226.79 Kg) of force
- Water-resistant and made entirely of non-corrosive materials
- Ball screw spins freely when hatch is fully opened or closed eliminating limit switches and burned out motors
- High impact, corrosion proof mounting brackets with stainless steel pull pins
- Powdered metal gears for strength and precision
- Stainless steel ram locks in any position
- CE-certified, ignition protected and ABYC compliant

Attention: 20A circuit breaker & 20A rated switch required.



12 Volt Models

Approximate Stroke	Approximate L.O.A. Retracted	Approximate L.O.A. Extended	Superseded Part #	Part #
4" (10.1 cm)	15" (38.1 cm)	19" (48.3 cm)	HL-400	20760-001
6" (15.2 cm)	20" (50.8 cm)	26" (66.0 cm)	HL-600	20762-001
8" (20.3 cm)	20" (50.8 cm)	28" (71.1 cm)	HL-800S	20764-001
8" (20.3 cm)	24" (60.9 cm)	32" (81.2 cm)	HL-800	20766-001
12" (30.5 cm)	24" (60.9 cm)	36" (91.4 cm)	HL-1200S	20768-001
12" (30.5 cm)	29" (73.7 cm)	41" (104 cm)	HL-1200	20770-001
16" (40.6 cm)	29" (73.7 cm)	45" (114 cm)	HL-1600S	20774-001
16" (40.6 cm)	33" (83.8 cm)	49" (124 cm)	HL-1600	20776-001
20" (50.8 cm)	33" (83.8 cm)	53" (134 cm)	HL-2000S	20778-001
20" (50.8 cm)	37" (93.9 cm)	57" (144 cm)	HL-2000	20780-001
24" (60.9 cm)	37" (93.9 cm)	61" (154 cm)	HL-2400S	20782-001
24" (60.9 cm)	41" (104 cm)	65" (165 cm)	HL-2400	20784-001
26" (66.0 cm)	47" (119 cm)	73" (185 cm)	HL-2600	20786-001
30" (76.2 cm)	47" (119 cm)	77" (195 cm)	HL-3000	20788-001

24 Volt Models

Approximate Stroke	Approximate L.O.A. Retracted	Approximate L.O.A. Extended	Superseded Part #	Part #
4" (10.1 cm)	15" (38.1 cm)	19" (48.3 cm)	HL-400/24V	20761-001
6" (15.2 cm)	20" (50.8 cm)	26" (66.0 cm)	HL-600/24V	20763-001
8" (20.3 cm)	20" (50.8 cm)	28" (71.1 cm)	HL-800S/24V	20765-001
8" (20.3 cm)	24" (60.9 cm)	32" (81.2 cm)	HL-800/24V	20767-001
12" (30.5 cm)	24" (60.9 cm)	36" (91.4 cm)	HL-1200S/24V	20769-001
12" (30.5 cm)	29" (73.7 cm)	41" (104 cm)	HL-1200/24V	20771-001
16" (40.6 cm)	29" (73.7 cm)	45" (114 cm)	HL-1600S/24V	20775-001
16" (40.6 cm)	33" (83.8 cm)	49" (124 cm)	HL-1600/24V	20777-001
20" (50.8 cm)	33" (83.8 cm)	53" (134 cm)	HL-2000S/24V	20779-001
20" (50.8 cm)	37" (93.9 cm)	57" (144 cm)	HL-2000/24V	20781-001
24" (60.9 cm)	37" (93.9 cm)	61" (154 cm)	HL-2400S/24V	20783-001
24" (60.9 cm)	41" (104 cm)	65" (165 cm)	HL-2400/24V	20785-001
26" (66.0 cm)	47" (119 cm)	73" (185 cm)	HL-2600/24V	20787-001
30" (76.2 cm)	47" (119 cm)	77" (195 cm)	HL-3000/24V	20789-001

Optional Hatch Lift Accessories

Hatch Lift Rocker Switches

12 & 24 Volt

Rocker Switch for hatch lifts with two 30" non-terminated power leads. This switch is CE certified and ABYC compliant. It is also 20A rated and clam shell packaged.

15096-001 Single Hatch Lift

15098-001 Dual Hatch Lift



Stainless Steel Non-locking Slide Bracket

For hatch lifts. In case of power failure, this bracket allows you to pull the hatch open a minimum of 5" (12.7 cm) in order to remove bolt for access. Non-retail box.

70381-001



Stainless Steel Pull Pin

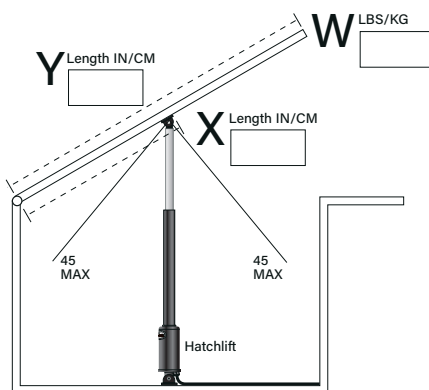
Clamshell packaged.

60101-001D

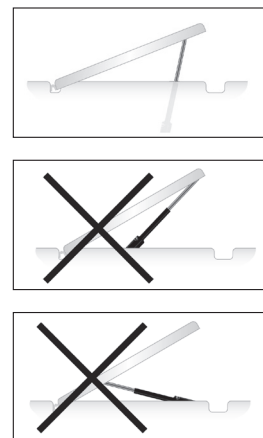


Lenco Hatch Lift Mounting

- Follow the chart to the right to figure out load on the hatch lift. Maximum load is 500 lbs (226.8 kg).
 Y = Total length of hatch
 X = Length from the hinge to the hatch lift mounting point
 W = Weight of the hatch to be lifted
- Determine the angle of the hatch lift mount. Do not exceed 45 degrees from center.
- Mount the hatch lift on the desired location as per the above instructions. Important: It may be necessary to shim the upper or lower mounting bracket up or down so the hatch does not bind when fully closed. The hatch lift does not stop pulling until it has reached its fully closed position. If the hatch fully closes before the hatch lift is fully retracted, it will cause damage to the lift or the mounting hardware. Shim the hatch lift with stainless washers for small amounts of length. Use Lenco shim part #50015-002D for lengths greater than 1/8" (3.2 mm).
- Wire to switch according to the hatch lift wiring diagram in manual.

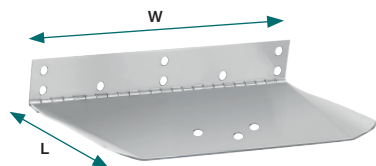


$$Y \times W \div X = \text{Force}$$



Replacement Blades

Stainless steel blades - Sold individually



Blade Series	L" x W"	Gauge	Blade Finish	Part #
Limited Space XDS	4 x 12	12	Standard	20797-001
	4 x 12	12	Electro-Polish	20797-021
Limited Space 101	4 x 12	12	Standard	20974-001
	4 x 12	12	Electro-Polish	20974-021
Limited Space	4 x 12	11	Standard	50480-001
	4 x 12	11	Electro-Polish	50480-021
Standard Series	9 x 9	12	Standard	20140-001
	9 x 12	12	Standard	20141-001
	9 x 12	12	Electro-Polish	20141-021
	9 x 18	12	Standard	20142-001
	9 x 24	12	Standard	20143-001
	9 x 30	12	Standard	20144-001
	9 x 36	12	Standard	20145-001
	9 x 40	12	Standard	20146-001
	12 x 12	12	Standard	20149-001
	12 x 12	12	Electro-Polish	20149-021
	12 x 18	12	Standard	20150-001
	12 x 24	12	Standard	20151-001
	12 x 30	12	Standard	20152-001
	12 x 36	12	Standard	20153-001
	12 x 40	12	Standard	20154-001
Edge Mount	9 x 9	12	Standard	20157-001
	9 x 12	12	Standard	20158-001
	12 x 9	12	Standard	20159-001
	12 x 9	12	Electro-Polish	20159-021
	12 x 12	12	Standard	20160-001
	12 x 12	12	Electro-Polish	20160-021
	12 x 18	12	Standard	20161-001
Standard Performance	9 x 9	12	Electro-Polish	20072-001
	9 x 12	12	Electro-Polish	20075-001
	12 x 9	12	Electro-Polish	20078-001
	12 x 12	12	Electro-Polish	20081-001
	14 x 12	12	Electro-Polish	20084-001
	16 x 12 (port)	12	Electro-Polish	20087-001
	16 x 12 (stbd)	12	Electro-Polish	20087-002
	18 x 14 (port)	12	Electro-Polish	20093-001
	18 x 14 (stbd)	12	Electro-Polish	20093-002
Airboat	9 x 12	12	Standard	20759-001
	9 x 14	12	Standard	20845-001

Blade Series	L" x W"	Gauge	Blade Finish	Part #
Heavy Duty Performance	12 x 12 (port)	12	Electro-Polish	20642-001
	12 x 12 (stbd)	12	Electro-Polish	20642-002
	14 x 12 (port)	12	Electro-Polish	20743-001
	14 x 12 (stbd)	12	Electro-Polish	20743-002
	16 x 12 (port)	12	Electro-Polish	20646-001
	16 x 12 (stbd)	12	Electro-Polish	20646-002
	18 x 14 (port)	12	Electro-Polish	20644-001
	18 x 14 (stbd)	12	Electro-Polish	20644-002
Super Strong (2016 & Prior)	12 x 18	7	Standard	20168-001
	12 x 24	7	Standard	20169-001
	12 x 30	7	Standard	20170-001
	12 x 36	7	Standard	20171-001
	16 x 24	7	Standard	20172-001
	16 x 30	7	Standard	20173-001
	16 x 36	7	Standard	20174-001
	16 x 42	7	Standard	20175-001
Super Strong (2017 +)	12 x 18	7	Standard	21393-001
	12 x 24	7	Standard	21402-001
	12 x 30	7	Standard	21452-001
	12 x 36	7	Standard	21453-001
	16 x 24	7	Standard	21404-001
	16 x 30	7	Standard	21403-001
	16 x 36	7	Standard	21405-001
	16 x 42	7	Standard	21394-001
High Performance	14 x 12 (port)	7	Electro-Polish	20380-001
	14 x 12 (stbd)	7	Electro-Polish	20380-002
	18 x 12 (port)	7	Electro-Polish	20374-001
	18 x 12 (stbd)	7	Electro-Polish	20374-002
	21 x 14 (port)	7	Electro-Polish	20376-001
	21 x 14 (stbd)	7	Electro-Polish	20376-002
	25 x 14 (port)	7	Electro-Polish	20378-001
	25 x 14 (stbd)	7	Electro-Polish	20378-002
	29 x 14 (port)	7	Electro-Polish	20725-001
	29 x 14 (stbd)	7	Electro-Polish	20725-002
Extreme Duty Performance	17 x 12 (port)	10	Electro-Polish	20129-001
	17 x 12 (stbd)	10	Electro-Polish	20129-002
	19 x 14 (port)	10	Electro-Polish	20330-001
	19 x 14 (stbd)	10	Electro-Polish	20330-002
	24 x 14 (port)	10	Electro-Polish	20623-001
	24 x 14 (stbd)	10	Electro-Polish	20623-002

Mounting Brackets & Hardware

Clamshell packaged unless otherwise noted.



Universal Actuator Mounting Bracket

Replacement Kit for 100 Series Actuators. Includes all stainless steel hardware and Delrin pin.

15099-001



120 Lower Mounting Bracket Kit

For XD and XDS Actuators. Includes all stainless steel hardware.

15140-001



Upper Mounting Bracket

Gland Seal included. Crastin (3 screw holes, 1 wire hole) 2008 through Current - New Style.

15085-001



Standard Upper Mounting Bracket

Gland Seal included. Crastin (3 screw holes, 1 wire hole). Previous through 2007 - Old Style.

50015-001D



Compact Upper Mounting Bracket

Gland Seal included. Crastin (2 screw holes, 1 wire hole). To be used in applications with limited space.

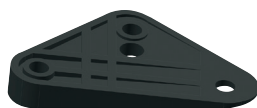
50225-001D



Standard Lower Mounting Bracket

Crastin (3 screw holes).

50014-001D



7 Degree Mounting Shim

For Upper & Lower Mounting Bracket - Crastin. Only compatible with 50014-001D and 50015-001D.

50015-002D



Standard Actuator Hardware Kit

Used in conjunction with Lenco 101 & 102 Standard Actuators. Includes all stainless steel hardware and Delrin pins.

10250-401D



Remote Gland Seal Kit

Used as an alternative method by routing the actuator wires through the transom above or below the waterline.

Contents: (2) mounts, (2) gland seals and (6) mounting screws.

15084-001



Hinge & Upper Bracket Mounting Screws

44 replacement screws.

10030-001D



Universal Actuator Replacement Hardware Kit

Contents will replace all hardware on any 100 Series actuator.

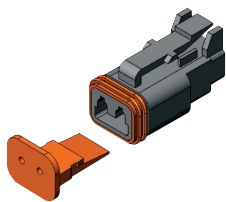
10250-410D

For use with these actuators:

15054-001	15058-001	15063-001	15122-001
15055-001	15059-001	15063-002	15129-001
15056-001	15060-001	15066-001	15130-001
15056-002	15061-001	15067-001	15131-001
15057-001	15062-001	15120-001	15132-001

Parts & Accessories

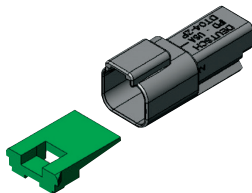
Clamshell packaged unless otherwise noted.



Deutsch Plug Kit

Actuator and Actuator Extension Harness Deutsch Plug Kit. Includes 5 plugs and 5 wedges.

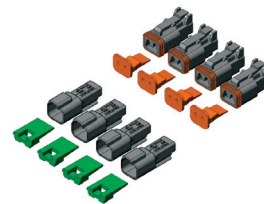
15107-001



Deutsch Receptacle Kit

Actuator Extension Harness Deutsch Receptacle Kit. Includes 5 receptacles and 5 wedges.

15107-002



Deutsch Plug Electrical Repair Kit

Includes 16 pieces total (plugs, receptacles and wedges). **Pins not included.**

15086-001



Sacrificial Anode

Aluminum Sacrificial Anode w/mounting screw. Pack of 2.

15093-001 3-3/4" (9.5 cm)

15092-001 1-7/8" (4.8 cm)



Delrin Mounting Pin

For 101 & 102 Actuators (1.5").

15087-001 2 pack

15087-002 10 pack (dealer)



Replacement Y Connector Harness Only

Used in conjunction with our Flybridge LED Indicator Kits.

30209-001D



36" Power Pigtail

36" Pigtail for 124SSR, 123SC & 122 (14-AWG wires w/ DTP Plug).

30140-001D



72" Power Pigtail

72" Pigtail for 124SSR, 123SC & 122 (10-AWG wires w/ DTP Plug).

30140-202D



72" Power Pigtail

Pigtail for 123DRSCCB Dual Ram Control Box (10-AWG Wires w/ DTHD Plug). Box Packaged.

10249-001



Replacement Flybridge Second Station Keypad Extension Harnesses

For extending the distance between the Keypad and the control box when the measurement exceeds 34" (86.4 cm). Overmolded connector.

30097-001 10' (3.1 m)

30097-002 20' (6.1 m)

30097-003 30' (9.1 m)

30097-004 40' (12.2 m)

30097-005 50' (15.2 m)



Actuator Extension Harnesses Deutsch Connected & ABYC Compliant

Sold individually - one required per actuator.

30133-001D 7' (2.3 m) 16-AWG / Clamshell Packaged

30133-002D 14' (4.3 m) 16-AWG / Clamshell Packaged

30133-103D 20' (6.1 m) 14-AWG / Clamshell Packaged

30142-201 26' (7.9 m) 12-AWG / Poly Bagged

30142-202 32' (9.8 m) 12-AWG / Poly Bagged

30142-104 45' (13.7m) 10-AWG / Poly Bagged



Lenco Marine
4700 SE Municipal Court
Stuart, Florida 34997
p +1 772.288.2662

lencomarine.navico.com
info.lencomarine@navicogroup.com

© 2024 Navico Group. All Rights Reserved.
Navico Group is a division of Brunswick Corporation.

®Reg. U.S. Pat. & Tm. Off, and ™ common law marks. Visit www.navico.com/intellectual-property
to review the global trademark rights for Navico Holding AS.

Unauthorized copying or reproduction is a violation of applicable laws.

LNC-014-CAT-0824